

APPLICATION CHART



* AVAILABLE IN RIGHT OR LEFT HANDED (ALL OTHER AIR BRUSHES ARE UNIVERSAL FOR BOTH RIGHT AND LEFT HANDED USE).

	AIRBRUSH TYPE							SPRAY AND COLOR MEDIA														APPLICATION															
	Internal Mix	External Mix	Double-Action	Single-Action	Gravity Feed	Side Cup Feed	Bottom Feed	Air Opaque	Air-Tex	MODEL flex	Watercolor	Gouache	Acrylic	Ink/Dye	Oil	Enamel	Lacquer	Textile	Glazes	Gesso	Varnish	Fine Art	Commercial Art	Hobby	Craft	T-Shirt/Textile	Automotive	Signs	Fingernail Painting	Photo Retouching	Taxidermy	Cake Decorating	Ceramics	Body Art/Cosmetics			
2020-SOTAR	*	*	*					◆	◆	◆	◆	◆	◆	◆									1	1	3		3		2	1	3						
100-FINE*	*		*			*		◆	◆	◆	◆	◆	◆	◆									1	1	3					1		2					
100-MEDIUM*	*		*			*		◆	◆	◆	◆	◆	◆	◆									2	2	2	2		2	2		2		2				
100-G-FINE	*		*		*			◆	◆	◆	◆	◆	◆	◆									1	1			2			1	2	2	2		2		
100-G-MEDIUM	*		*		*			◆	◆	◆	◆	◆	◆	◆									2	2	3	3		3		2	2	3	1	2	2		2
100-SG-FINE	*		*		*			◆	◆	◆	◆	◆	◆	◆									2	2						2							
100-SG-MEDIUM	*		*		*			◆	◆	◆	◆	◆	◆	◆									2	2	3				1	2		2				2	
100-LG-FINE	*		*		*			◆	◆	◆	◆	◆	◆	◆									1	1			2			1	2	2				2	
100-LG-MEDIUM	*		*		*			◆	◆	◆	◆	◆	◆	◆									2	2	3	3		3		2	2	3	1	2	2		2
100-LG-HEAVY	*		*		*			◆	◆	◆	◆	◆	◆	◆									2	2	3	3		3		2	2	3	1	2	2		2
150-FINE	*		*			*		◆	◆	◆	◆	◆	◆	◆									1	1													
150-MEDIUM	*		*			*		◆	◆	◆	◆	◆	◆	◆									2	2	1	1	2	1	2		2	1	2	2	2		2
150-HEAVY	*		*			*		◆	◆	◆	◆	◆	◆	◆										2	2	1	2	2			2	2	2	2		2	2
155-ANTHEM™	*		*			*		◆	◆	◆	◆	◆	◆	◆									2	2	1	1	1	1			1	2	1	1			
175 CRESCENDO™ F	*		*			*		◆	◆	◆	◆	◆	◆	◆									1	1	3	3	3	3			3						
175 CRESCENDO™ M	*		*			*		◆	◆	◆	◆	◆	◆	◆									2	2	1	1	1	1			1	2	1	2			
175 CRESCENDO™ H	*		*			*		◆	◆	◆	◆	◆	◆	◆										2	2	2	2	2			2			2			
360-UNIVERSAL™	*		*		*	*		◆	◆	◆	◆	◆	◆	◆									1	1	1	1	1	1	2	2	1	1	1	1	1	1	1
200 SG-FINE	*			*	*			◆	◆	◆	◆	◆	◆	◆									1	1						1		2					
200 SG-MEDIUM	*			*	*			◆	◆	◆	◆	◆	◆	◆									2	2						1	2		1				
200 G-FINE	*			*	*			◆	◆	◆	◆	◆	◆	◆									1	1						1		2					
200 G-MEDIUM	*			*	*			◆	◆	◆	◆	◆	◆	◆									2	2						1	2	2	1				
200-GENERAL PURPOSE	*			*		*		◆	◆	◆	◆	◆	◆	◆									2	2	1	1	3	1	1			1	1	1	1	1	1
200-20 DETAIL	*			*		*		◆	◆	◆	◆	◆	◆	◆									1	1	3		3			3							
350-FINE		*		*		*		◆	◆	◆	◆	◆	◆	◆									3	3	2	2	3	3	2		2		2				
350-MEDIUM		*		*		*		◆	◆	◆	◆	◆	◆	◆									3	3	1	1	3	3			1		1				
350-HEAVY		*		*		*		◆	◆	◆	◆	◆	◆	◆										3	3	3	3				3		3				
250		*		*		*		◆	◆	◆	◆	◆	◆	◆									3	3	2	3	3	3			3		2				
400-FINE	*		*			*		◆	◆	◆	◆	◆	◆	◆									3	3	3		2	2			3		3				
400-MEDIUM	*		*			*		◆	◆	◆	◆	◆	◆	◆									3	3	3	3		1	1			3		3			
400-HEAVY	*		*			*		◆	◆	◆	◆	◆	◆	◆													3	3									
Omni 3000	*		*			*		◆	◆	◆	◆	◆	◆	◆									2	2	1	1	1	1			1	2	1	1			
Omni 4000	*		*		*			◆	◆	◆	◆	◆	◆	◆									2	2	3	3		3		2	2	3	1	2	2		
Omni 5000	*		*		*			◆	◆	◆	◆	◆	◆	◆									2	2	3	3		3		2	2	3	1	2	2		
Omni 6000	*		*		*			◆	◆	◆	◆	◆	◆	◆									2	2	2	2		2	2		2		2				
Omni Nailaire	*		*		*			◆	◆	◆	◆	◆	◆	◆									2	2	3				1	2		2					2
Omni Matrix	*		*		*			◆	◆	◆	◆	◆	◆	◆									1	1	1	1	1	1	2	2	1	1	1	1	1	1	1
Vega 600	*			*		*		◆	◆	◆	◆	◆	◆	◆									2	2	1	1	3	1	1			1	1	1	1	1	1
Vega 1000	*			*		*		◆	◆	◆	◆	◆	◆	◆									2	2	3	3		3		2	2	3	1	2	2		
Vega 2000	*			*		*		◆	◆	◆	◆	◆	◆	◆									2	2	1	1	1	1			1	2	1	1			
Vega Nailaire	*			*		*		◆	◆	◆	◆	◆	◆	◆									2	2	3				1	2		2					2

* Airbrush description ◆ Recommended spray & color media and properly reduced materials.
 1 = Best Choice 2 = Very Good Choice 3 = Good Choice for Certain Applications



◀ "I use Badger airbrushes because the Sotar and the Anthem allow me to execute any job perfectly. No muss. No fuss. Only fine quality performance and handling!" *John McDavitt*



▶ "As a fine artist working in mixed media, Badger airbrushes have been indispensable in applying paint to the many different surfaces of my pieces." *Virginia Gabaldo*



▲ "As an artist who has used airbrush in my work since 1972, the Badger airbrush has truly become an extension of myself and my art for 30 years. I could no imagine using any other airbrush other than a Badger." *Peter West MFA*

"If you're not using a Badger airbrush, the train has left the station and you're not on it." *John T. Jacobson* ▶



◀ "Ease of use and consistency of results. I have 3 Badger airbrushes and like them all!" *Jim Six*



◀ "To produce an airbrush illustration of the best quality is no laughing matter...the airbrushes and equipment I use for the task have to be the best. Badger airbrushes, compressors and products spare me the tears and heartaches of frustration and failure and allow me to creatively perform at an optimum level." *Peter Stallard*

▶ "Badger airbrushes are the only choice when it comes to value, quality, and customer support." *Jeremy Vecoli*



◀ "The Badger airbrush meets the challenge of various paints and is reliable and very versatile." *Judy Schieck*

▶ "Badger MODELflex™ paints are truly "user friendly" as they go on easy and clean up easily. What can be better than a fantastic paint job that is actually easy to accomplish?" *Kurt Van Dahm*



◀ "I've used Badger colors, and they are second to none in regard to their intensity and concentration. The Badger opaque white is the only white I will use. The Badger frisket is also superb. The adhesive used to back their frisket is just right, resulting in no paint or board pickup during all the times I've used it." *Mark A. Fredrickson*

BADGER

We are airbrushing!

"If you're not using a Badger airbrush, the train has left the station and you're not on it." *John T. Jacobson*

"Badger listens. Does anyone else?" "Scooter" *Ellis*

"Badger equipment is THE best!" *Frank Reyes*

"Promise me anything, but give me a Badger!" *Gary "Boomer" Johnson*

"Badger rocks!" *Joe Porter*

"The Badger airbrush meets the challenge of various paints and is reliable and very versatile." *Judy Schieck*

"Badger Anthem airbrushes are all I use! Whether I am creating your next NHL goaltender mask or just doing my day to day T-shirt painting, I never need another airbrush!" *Jason Livery*

"Badger airbrushes provide the detail and the ease of maintenance needed for my classroom instruction."
Joyce Sheets

"Badger MODELflex™ paints are truly "user friendly" as they go on easy and clean up easily. What can be better than a fantastic paint job that is actually easy to accomplish?" *Kurt Van Dahm*

"Whether painting a woodcarving for the most demanding of competitions or teaching airbrush classes to beginners, Badger is my choice for precision, practicality, and ease of use." *Clark Schreibeis*

"As an artist who has used airbrush in my work since 1972, the Badger Airbrush has truly become an extension of myself and my Art for 30 years. I could no imagine using any other airbrush other than a Badger." *Peter West MFA*

"Badger has always been like family to me. Not only do they offer the widest selection of durable equipment I've grown very comfortable using, but whenever a problem might arise they're always there to help set things straight, right away." *Bill McGuffey*

"I need a paint that is easy to apply, consistent in color and won't crack off for the parties at the Playboy Mansion. We can be body painting as many as 20 girls in lingerie and various other outfits for these events, so there isn't much room or time for error. Badger paints do these things for me and more." *Mark Frazier*

"I've never been let down by a Badger Product. Whether you have a 5 minute deadline or not, they are always right behind you." *Tom Gilliland*

"Badger is a part of every painting I create. Badger's Air-Opaque white is the best white I've ever used. Period!"
Dru Blair

"Ease of use and consistency of results. I have 3 Badger airbrushes and like them all!" *Jim Six*

"Badger is excellent! Excellent quality, excellent coverage, excellent airbrushes and paints for the model industry,"
Mac MacCalla

"Badger's airbrushes, paint lines, durability and quality are top notch. Their craftsmanship and technical support is exceptional. I use my Omni every day." *Michael Smith*

"Badger makes me look good! Sometimes I still shock myself with the great results!" *Steve Koepf, Parma Int'l.*

"Thayer & Chandler airbrushes take me anywhere I want to go—I've tried them all and always go back to the best." *Candi Margetson*

"I've been a model railroader for thirty-five years and been using Badger Airbrushes since the very beginning. I don't use anything else." *John Lee*

"I use Badger products because as a body artist I have to finish painting quickly, so I need reliable equipment."
Neil Roth

"We're all out for the best brush, the best quality. Crescendo is it. Crescendo combines everything I look for in a gun. It's a beauty." *Art Alvarez*

"T-shirt artists put a gun through hell. Crescendo is the gun to have if you're a serious professional." *Tim Mitchell*

"The 200-20 detail airbrush is the best airbrush I've used in 20+ years of custom painting. It was specially designed to spray lacquers and acrylics in detail applications. I love it. I would highly recommend it to you." *Chris Toth*

BADGER AIR-BRUSH CO.

9128 W. Belmont Avenue. Franklin Park, IL 60131

800-AIR-BRUSH • Fax: 800-57BADGER

BA 2003

website: <http://www.badgerairbrush.com>



BADGER AIR-BRUSH CO. reserves the right to discontinue or change specifications or designs at any time, without incurring any obligations. Some features shown, or described previously, are optional equipment items which are available at extra charge.

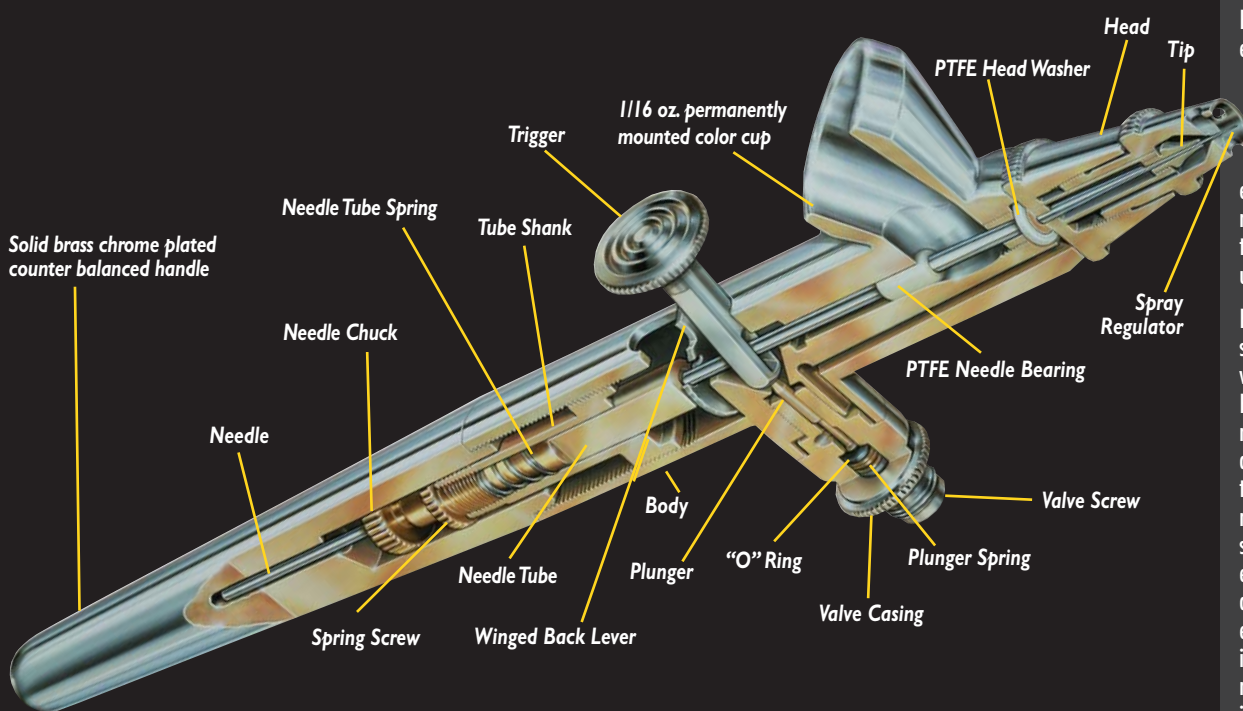
BADGER AIR-BRUSH COMPANY

THAYER & CHANDLER

IMAGINE



REALIZE



Before choosing an airbrush, consider the factors unique to your particular situation. What type of work will the airbrush be used for? What type of materials will be sprayed through the airbrush? What is your level of experience? etc? The list of terms, the cut-away airbrush diagram, and the reference chart will help you select the best airbrush for your intended application. But if you have questions, you can always call us at 1(800) AIR-BRUSH.

INTERNAL MIX indicates that air and paint mix inside the airbrush, producing a thoroughly atomized "fine dot" spray pattern.

EXTERNAL MIX indicates that air and paint mix outside the airbrush producing a larger, coarser spray pattern than internal mix airbrushes.

DUAL ACTION refers to airbrushes on which the trigger controls both air and color (down for air, back for color). This style airbrush allows for varying line widths while spraying.

SINGLE ACTION refers to airbrushes on which the trigger controls only the air flow. The amount of fluid is regulated by turning the needle adjustment screw. When the trigger is depressed, a pre-set amount of fluid is sprayed.

GRAVITY FEED refers to airbrushes with top-mounted color cups in which gravity draws paint into the airbrush. Less air pressure (as low as 8-16 PSI) is required to operate this type of airbrush.

BOTTOM FEED refers to airbrushes on which paint enters through a siphon tube or color cup attached to the bottom of the airbrush. This type of airbrush requires at least 20-30 PSI to operate properly.

SIDE FEED refers to airbrushes on which a small color cup fits into the side of the airbrush. This type of airbrush requires at least 20 PSI to operate.

Airbrushes are available in varying needle/nozzle configurations accommodating a range of sprayable materials.

Fine: Best suited to spray thinner materials such as water colors, inks, dyes, food coloring and gouache.

Medium: The most popular choice; will spray airbrush ready paints, such as Badger's Air-Opaque, Air-Text, Modelflex, Freakflex, Nail Flair, and other properly reduced acrylics.

Heavy: Ideal for heavily pigmented and/or higher viscosity materials such as enamels, lacquers, reduced glazes, gesso, and varnish.

Note: When reducing mediums to sprayable viscosity, the recommended consistency is comparable to 2% milk.

Badger Air-Brush Co. has embraced the philosophies of high quality, good value, and superior service since our inception nearly forty years ago. From the people we employ to the products we manufacture, Badger's dedication to excellence and quality is unmatched.

Every Badger product, at every stage of production, is created with pride and dedication. Each Badger airbrush component is machined to exacting standards, assembled carefully by hand and then tested in use to assure that it not only meets our high standards, but exceeds your expectations. Our research and development teams consistently experiment with new product ideas and designs in order to meet the changing needs and interests of airbrushers of all levels for every purpose.

Furthermore, our commitment to quality and innovation extends beyond the sale of an airbrush. As we have grown, we have established an extensive customer service/dealer network which can promptly provide supplies and replacement parts. In addition, Badger has developed a network of airbrush consultants that continually provide us with feedback from the end user's perspective. This consultant network also enables Badger to excel as an education and trouble shooting resource for airbrushers of all skill levels. The conscientious manner in which we stand behind our product and the high level of support we offer BADGER airbrush users (and airbrushers in general) are part of what distinguishes BADGER from other airbrush manufacturers.

As a result we approach the coming century confident in our people, products and philosophy. However, Badger Air-Brush Co. is not content to rest on the past achievements that have made us the leading manufacturer of airbrushes in the world. You can count on Badger to continue to push the envelope, through innovative new products, advanced airbrush technology and design, more accessible airbrush education, superior service... and a relentless desire to meet your air brushing needs... to become and remain your airbrush of choice.

BADGER INDEX

● Sotar, Model 2020	2	● Model 400	7
● Universal Model 360	2	● Omni Detail Airbrushes	8
● Anthem, Model 155	3	● Vega Detail Airbrushes	9
● Crescendo, Model 175	3	● Omni & Vega Sets	9
● Model 100 Series	4	● Airbrush Sets	10-12
● Model 150 Series	5	● Airbrush Easy™ Accessories	13-16
● Model 200	5	● Compressors	17-18
● Model 350	6	● Paints	19-23
● Model 250	6	● Gallery	24-25
● Model 260	7		

MODEL 2020

GRAVITY FEED, DUAL ACTION, INTERNAL MIX

The 2020 provides the professional illustrator with an airbrush capable of producing the ultimate in fine line detail. It is more precise, more comfortable, and more reliable than any competitor. When fine line detail or the finest paint atomization for a "soft" spray pattern is required, SOTAR is the only choice. Finely pigmented properly reduced paints, water colors, inks, dyes, and low viscosity acrylics can be sprayed with the 2020. The elongated body maintains an efficient distance between trigger and paint reservoir. The trigger and back lever assemble easily thanks to our innovative "track and winged" design.



Patent Numbers 5,421,518,
5,687,913,
5,779,157

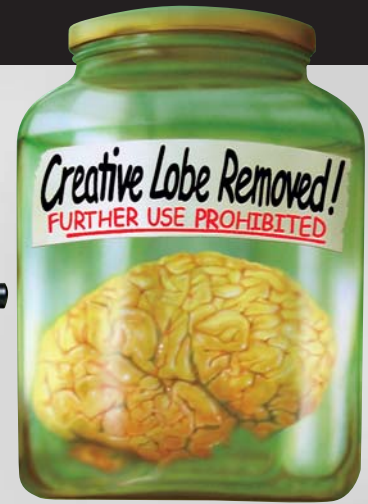


Illustration by: Peter Stallard

MODEL 2020-1

The original design 2020 with small paint reservoir is perfect for intricate detail work requiring minimal paint usage.

MODEL 2020-2

The 2020 with mounted 1/12 oz. color cup allows for extended use before having to add color:

Fine (Black)—"Hair" line to 3/4" (19mm) spray pattern.

Medium (White)—Pen line to 1" (25mm) spray pattern.

Large (Clear)—Pencil line to 1-1/4" (31mm) spray pattern.

Illustration by:
Mark A. Fredrickson



Illustration by: Dru Blair

MODEL 360

DUAL (GRAVITY/BOTTOM) FEED, DUAL ACTION, INTERNAL MIX

The Universal Model 360 is the only airbrush capable of performing in a gravity feed as well as a bottom feed mode. Never before has one airbrush provided so much versatility. **It is two airbrushes in one.**



Patent Numbers 5,366,158,
5,779,157

FEATURES

- * 360° front end rotation to allow for either gravity or bottom feed usage
- * Single nozzle/needle sprays from pencil lines to 3" (76mm) spray pattern
- * Single size nozzle/needle design for spraying all materials, acrylics to watercolors, inks to lacquers, Air-Opaque™, Air-Text™ and MODELflex™ airbrush paints
- * Easy access needle assembly
- * Finger tight assembly tolerances
- * Correct weight apportionment balance system
- * Ultra comfort, ergonomically correct trigger cushion
- * Lifetime warranty on labor, rotational seal and PTFE seals
- * For sets see page 10



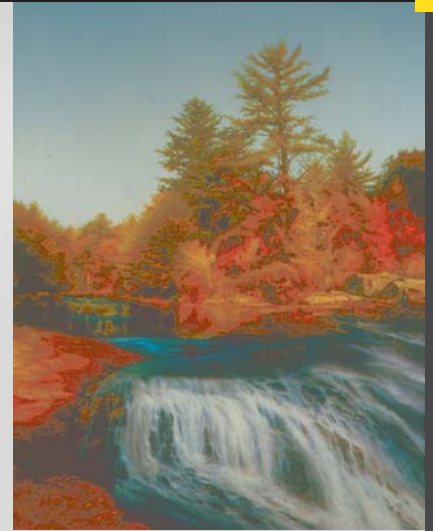
MODEL 155

DUAL ACTION, INTERNAL MIX, SIPHON (BOTTOM) FEED



The Anthem, Model 155, is the most comfortable, reliable, proficient, cost effective, user friendly airbrush ever. The two angle needle tip precisely mates with the Anthem's cone shaped nozzle enabling a single needle/nozzle configuration to spray virtually any desired material, thus eliminating the need for fine, medium, or large needle/nozzle variations. The Anthem's body design provides exacting balance and long term user comfort. The Anthem also provides flawless performance in the most rigorous of production airbrushing environments.

*Acrylic on canvas by:
Michael Gumbert*



FEATURES

- * Single needle/nozzle for spraying all mediums, inks, dyes, watercolors, acrylics, enamels, lacquers, glazes, latex, Air-Opaque™, Air-TeX™ and MODELflex™ colors
- * Single needle/nozzle sprays pencil lines to 3" (76mm) spray pattern
- * Minimal spare parts to stock
- * Easy maintenance and cleaning
- * Fastest needle release on the market
- * Finger tight assembly tolerances
- * Excellent for multiple applications for novice to advanced airbrushers
- * Comes with a comfortable, adjustable trigger cushion
- * Lifetime warranty on labor and PTFE seals
- * For sets see page 10

MODEL 175

DUAL ACTION, INTERNAL MIX, SIPHON (BOTTOM) FEED



The Crescendo™, Model 175, is the airbrush designed by professionals for professional production airbrushing. This durable, versatile airbrush works continuously with precision and efficiency. Spray regulators and tips change easily for greater flexibility on the fly. Snap-off handle allows for quick needle changes and cleaning. T-Shirt artists, fine artists, fabric designers, custom automotive painters, model painters, and taxidermists use the Crescendo™. It sprays properly reduced acrylics, enamels, lacquers, gouaches, fabric colors, inks, dyes, ceramic colors and glazes, watercolors, Air-Opaque™, Air-TeX™ and MODELflex™ airbrush colors.

FEATURES

- * Usable with 1/4oz. (7ml) free-standing color cup, 3/4oz. (22ml), 2oz. (60ml), or 3oz. (90ml) paint jars
- * Self-lubricating PTFE needle bearing enables continuous proper paint flow
- * Winged back lever design for easy reassembly and smooth trigger control
- * One-piece, non-slip, trigger with ergo-comfort trigger cushion
- * Easy maintenance and cleaning
- * Snap-off handle for quick needle changes and cleaning
- * Easy change tips and head assemblies...no tools required
- * Fine (F) - spray width ranges from pencil line to 2" (51mm spray pattern)
- * Medium (M) - 1/32" (0.8mm) to 2 1/2" (63mm spray pattern)
- * Heavy (H) - 1/16" (1.5mm) to 3" (76mm spray pattern)
- * Lifetime warranty on labor and PTFE seals
- * For sets see page 10



*Radio control truck by:
Steve Koepf
of Parma International*

MODEL 100

DUAL ACTION, INTERNAL MIX SERIES

Badger's 100 Series professional airbrushes offer a variety of styles - gravity feed, slotted gravity feed, and side feed - to satisfy every professional's needs. Each of these exceptional airbrushes offers precision performance for a soft spray pattern and tight line detail. The 100 Series features correctly proportioned body weight providing perfect balance and comfort for the most exacting professional applications.

MODEL 100 LG GRAVITY FEED

This airbrush runs the gamut from fine detail to background coverage. A 1/3oz. (10.5ml) permanently mounted color cup lets you get close to your work, and allows easy cleaning and color changing. The long-standing choice of fine artists, illustrators, and decorative painters. (Available as Fine, Medium and/or Heavy).

MODEL 100 G GRAVITY FEED

This airbrush is designed for detail. It features a permanent, top-mounted 1/16oz. (2ml) color cup angled to allow work on horizontal surfaces. Perfect for fine artists, illustrators, and cake decorators. (Available in Fine and/or Medium.) (100GB for continuous flow, single action bakery airbrush)

MODEL 100 SG GRAVITY FEED

For extremely fine precision work, the 100 SG has a built-in fluid cavity. It's the choice of professional fingernail artists. (Available as Fine and/or Medium).

MODEL 100 SIDE FEED

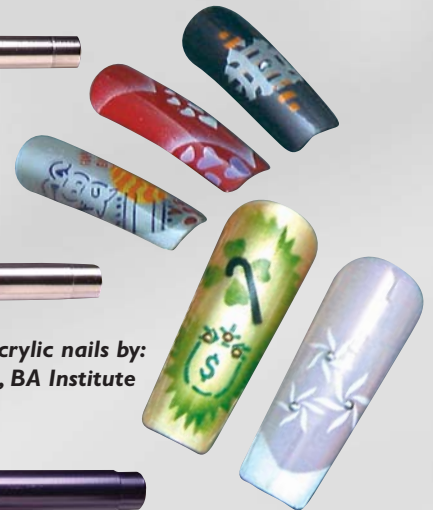
A traditional photo retoucher's airbrush, the 100 side feed has a rotational color cup for horizontal or vertical work. Fine artists, photo retouchers, and illustrators will find this model to be efficient. (Available in left or right hand models with Fine and/or Medium nozzles/needles).

FEATURES

- * Self-lubricating PTFE needle bearing enables continuous proper paint flow and prevents needle wear
- * Non-slip, one-piece trigger
- * PTFE head seal assures efficient air flow
- * Winged back lever design for easy reassembly and smooth trigger control
- * Fine (F) - pencil line to 2" (51mm) spray pattern
- * Medium (M) - 1/32" (0.8mm) to 2 1/2" (63mm) spray pattern
- * Heavy (H) - 1/16" (1.5mm) to 3" (76mm) spray pattern
- * For sets see page 10

The Model 100 Series sprays properly reduced acrylics and pre-reduced materials such as inks, dyes, watercolors, gouaches, Air-Opaque™, Air-TeX™ and MODELflex™ airbrush colors.

Food coloring on cake
by: Julia Gawron



Nail Flair on acrylic nails by:
Sandy Bedford, BA Institute

AIRBRUSHES



Before Mac

Weathering by: Mac McCalla



After Mac

MODEL 150

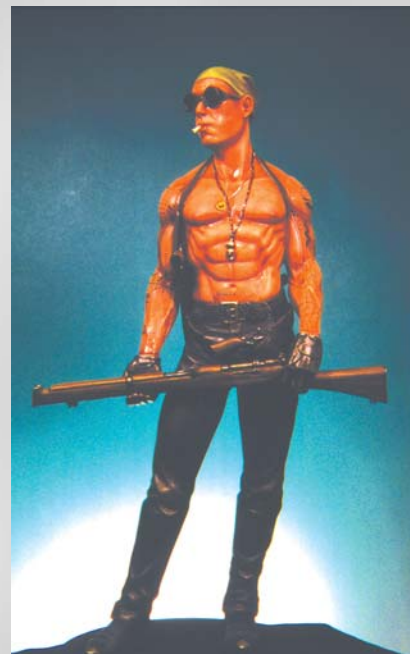
DUAL ACTION, INTERNAL MIX, SIPHON (BOTTOM) FEED



The versatility of the 150 allows for a broad range of applications, making it the "classic" airbrush in the Badger line. The 150 accepts a 3/4 oz. color cup for small volume painting needs, or three larger sized jars can be used for bigger jobs. Used by everyone from artists to taxidermists and auto customizers to furniture refinishers, this airbrush sprays properly reduced acrylics, acrylic enamels and lacquers, gouaches, fabric colors, water colors, inks, dyes, Air-Opaque™, Air-TeX™ and MODELflex™ airbrush colors. (Available as Fine, Medium and/or Heavy).

FEATURES

- * Choose 1/4oz. (7ml) free-standing color cup, 3/4oz. (22ml), 2oz. (60ml), or 3oz. (90ml) paint jars
- * Color cup and one-piece jar adaptor taper-fit for quick color changing
- * Self-lubricating PTFE needle bearing enables continuous proper paint flow and prevents needle wear
- * PTFE head seal assures efficient air flow
- * Winged back lever design and one piece, non-slip trigger for easy reassembly and smooth control
- * Fine (F) - pencil line to 2" (51mm) spray pattern
- * Medium (M) - 1/32" (0.8mm) to 2 1/2" (63mm) spray pattern
- * Heavy (H) - from 1/16" (1.5mm) to 3" (76mm) spray pattern
- * For sets see page 10



FREAKFlex™ on vinyl resin by: Tom Gilliland

NEW

MODEL 200

SINGLE ACTION, INTERNAL MIX SERIES



Badger's 200 Series offers the ease of single action operation while providing the fine spray pattern of internal mix paint atomization for professional results. Depressing the trigger releases a pre-set amount of color which can be regulated by turning a needle adjustment screw at the back of the airbrush handle. Once the desired paint flow is set the airbrush will maintain the preset spray pattern until the user chooses to change it.

MODEL 200 BOTTOM FEED AIRBRUSH

Simplicity of use makes this the top choice for the advanced model painter or decorative stenciler. Also an excellent airbrush for painting posters, auto detailing and ceramics. The Model 200 will spray inks, dyes, watercolors, gouaches, properly reduced acrylics, fabric paints, modeling paints, automotive lacquers and enamels, most ceramic stains and glazes, Air-TeX™, Air-Opaque™ and MODELflex™ airbrush colors. (Available in a single head design or detail design).

MODEL 200-20 DETAIL AIRBRUSH

The finest single action internal mix detail airbrush ever. The Model 200-20 is designed with the PPS paint flow adjusting system, enabling recurring accuracy in spray pattern and line control.

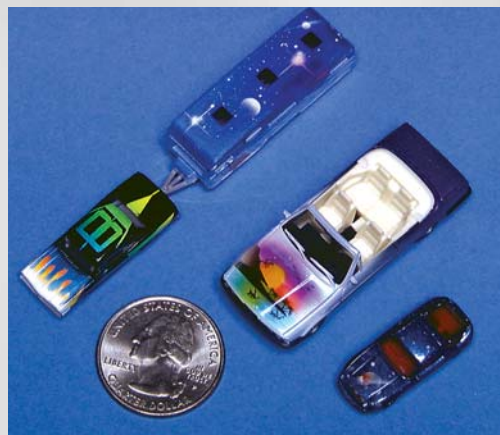
THE 200 GRAVITY FEED AIRBRUSH

Offers single action simplicity in a gravity feed airbrush. Allows for "close in" spraying. Excellent for model detailing and fingernail artists utilizing mini-stencils. (Available as Fine and/or Medium).

FEATURES

- * Choice of 3/4oz. (22ml), 2oz. (60ml), or 3oz. (90ml) paint jars, and 1/4oz. (7ml) free-standing color cup (Bottom feed only)
- * Color cup and one-piece jar adaptor taper-fit for quick color change (Bottom feed only)
- * Self-lubricating PTFE needle bearing enables continuous proper paint flow and prevents needle wear
- * PTFE head seal assures efficient air flow
- * Non-slip, one-piece trigger
- * Fine (F) - pencil line to 2" (51mm) spray pattern
- * Medium (M) - 1/32" (0.8mm) to 2 1/2" (63mm) spray pattern
- * For sets see page 10

Miniature models by: Jorg Sellnow



AIRBRUSHES

MODEL 350

SINGLE ACTION, EXTERNAL MIX, BOTTOM FEED



The 350 is an external mix airbrush. Air and paint mix outside the airbrush, creating a larger, coarser "dot" pattern and providing a heavier spray volume. The 350 is superb for base coating, stenciling, stipling, touch up projects, etc. An excellent choice for beginning students, hobbyists, ceramists, and automotive painters. This model sprays high viscosity materials such as ceramic glazes and stains, and hobby enamels with ease. It is also effectively used with properly reduced acrylics, inks, dyes, watercolors, acrylic lacquers, enamels, Air-Opaque™, Air-TeX™ and MODELflex™ airbrush colors. (Available as Fine, Medium and/or Heavy).

FEATURES

- * Choice of 3/4oz. (22ml), 2oz. (60ml), or 3oz. (90ml) paint jars, or 1/4oz. (7ml) free-standing color cup
- * Color cup and one-piece jar adaptor taper-fit for quick color changes
- * Sprays higher viscosity materials
- * Excellent for more volumous spray projects
- * Constructed of high-impact nylon
- * Solvent and chemical resistant
- * Nozzles/needles made of precision manufactured metals
- * Fine (F) - 1/8" (3mm) to 2" (51mm) spray pattern
- * Medium (M) - 1/4" (6mm) to 2" (63mm) spray pattern
- * Heavy (H) - 1/2" (12mm) to 3" (76mm) spray pattern
- * For sets see page 10



Taxidermy by: J.T. Reese

MODEL 250

SINGLE ACTION, EXTERNAL MIX, BOTTOM FEED

Any job requiring a simple, yet effective spray is easily completed by the Model 250 Series. The 250 is basic enough for children, (ages 8 and up) to use with minimal supervision, yet efficient enough for adult use. Hands-on inspection and testing insure Badger's high quality standards.



Custom model car by: Steve Lima, Schiller Park Police Department

MODEL 250 SPRAY GUN

This gun is perfect for jobs requiring large overall coverage with medium to heavy viscosity materials. Modeling, school projects, home improvement projects, workshop jobs, ceramic underglazing, fogging, texturing and stenciling can all be handled by the Model 250. The spray pattern can be adjusted from 3/4" (19mm) to 2" (50.8mm) simply by turning the paint tip. The Model 250 uses 3/4oz. (22ml) or 2oz. (60ml) jars.



MODEL 250-4 MINI SPRAY GUN

The Model 250-4 is the same as the 250, but features a larger body shape and a 4oz. (120ml) capacity jar.

FEATURES

- * Sprays virtually any properly reduced material
- * Operates on 20 to 50 PSI. (1.4 to 3.5 bar)
- * Adaptable to compressors, CO2 tanks and aerosol propellant cans
- * 250-4 has up to 4 oz material capacity for larger jobs
- * For sets see page 10



Glass paint on holiday ornament by: Judy Schieck



MODEL 260

ABRASIVE GUN

The 260 Hobby Abrasive Gun creates an endless variety of effects in glass etching, or cuts monograms in wood or metal. The 260 can also prep wood, plastic, and metal surfaces and curved, hard to reach areas for refinishing. Realistic weathering effects are easily achieved using this gun. The Model 260 will handle 220 grit, or finer abrasive materials.



MODEL 260-3

Set includes a hobby abrasive gun with attached 4oz. (120ml) jar, air hose, Propel™ can, Propel™ regulator, and 12oz. (340g) net weight jar of aluminum oxide, plus dust mask.

MODEL 260-1

The set is the same as the 260-3, excluding the Propel™ can and regulator (not pictured).

CONSTRUCTION

The 260 is made of high-impact delrin and precision metal parts. The tip is hardened steel.

Badger's Aluminum Oxide Abrasive is specially ground to a 220 grit for use with the 260 Abrasive Gun. Available in 12oz. (340g) and 5lb. (2.27kg) jars.

Use of wrap-around safety goggles, a dust mask and gloves is recommended when using the 260 Hobby Abrasive Gun. The 260 is not recommended for use by children.

MODEL 400

DETAIL/TOUCH-UP GUN

The 400 strikes a balance between airbrushes and high production spray guns. Most often used by automotive painters, the 400 also handles large murals, large RC planes and boats, acrylic renderings, backdrops and applications of gesso or varnish. Made of precision-machined, die-cast aluminum and zinc parts, the Model 400 is assembled, inspected and tested in actual use by our skilled technicians before leaving the factory.

FEATURES

- * Unique overhead convertible trigger design converts easily to right or left handed use
- * Choice of three interchangeable paint tips, air nozzles and needles. (Fine, Medium and/or Heavy)
- * Produces round or fan shaped spray patterns which may be directed horizontally or vertically
- * 8oz. (240ml) non-drip, all aluminum paint cup with simple cam action locking mechanism for quick color changes
- * Operated by compressors, suction feed, or fluid pressure tank
- * Separate fluid and fan controls are adjustable
- * Flow rates and operating pressures for fan spray:
 - * Fine - 1.7CFM @ 30 PSI. (48L/min@2.1 bar)
 - * Medium - 2.3CFM @ 30 PSI. (65L/min@2.1 bar)
 - * Heavy - 3.5CFM @ 30 PSI. (99L/min@2.1 bar)
- * Air and paint inlets are 1/4" NPT



Acrylics on surface etched glass mug



Surface etched glass mug



Abrasive artwork and acrylic painting by: Frank Reyes, Glass Innovators

SPRAY SIZES AT 7" WORKING DISTANCE

Round Spray Diameter

Fine.....1/2" to 3"

Medium.....5/8" to 4"

Heavy.....3/4" to 5"

Fan Spray Height and Width

Fine.....3" x 1/2"

Medium.....4" x 3/4"

Heavy.....5" x 3/4"

400-1 Fine, 400-2 Medium, 400-3 Heavy

OMNI DETAIL AIRBRUSHES

DUAL ACTION, INTERNAL MIX SERIES

The Omni series was designed for tight detail to broad spraying using a "One Tip-One Needle" combination. When trying for that one last detail, just the right blend or a great smooth finish—Omni detail guns are ideal. Omni airbrushes work equally well at low or high pressures for varying applications. Besides performing well with finely ground colors, Omni airbrushes can handle heavier automotive paint with no need to change tips/needles. Designed with state-of-the-art engineering, Omni airbrushes are manufactured to the tightest possible tolerances. Omni airbrushes feature heavy nickel chrome plating, superior balance, solvent resistant o-rings and numerous other performance enhancements. Omni airbrushes are known worldwide as the performance and price preference to other similarly designed airbrushes.

Illustration on canvas by: Michael Smith



SPECIAL OMNI FEATURE

The reversible air cap guard is unique and exclusive to Omni airbrushes—reversing the air cap guard creates a smooth, aerodynamically rounded area at the tip/needle intersection enabling optimum air flow efficiency for the sharpest and finest lines. The "reverse-a-guard" air cap allows for easy removal of tip dry. It can also be utilized to protect the needle tip for novice airbrushers or in more delicate airbrush applications.

OTHER FEATURES

- * Counter balanced cut-away handle
- * Stainless steel needle
- * Self-centering, self-sealing fluid tip
- * Solvent resistant "O" rings
- * Heavy nickel chrome plating
- * Attached needle tube – rocker lever assembly
- * One piece trigger
- * Adjustable trigger tension
- * Each model hand tested in actual use
- * Adjustable needle bearings (4000 and 6000 models)
- * "Reverse-a-guard" air cap
- * Adaptable for use with all major brand airbrush jars and color cups
- * One year limited warranty on all components
- * Lifetime labor warranty



Reverse-a-guard air cap



Model	Type/Action	Reservoir Capacity	Fluid Viscosity	Spray Pattern
3000	BFDA	1/4 oz. cup to 3 oz. jar	Thin to the consistency of	2x hairline to 1"
4000	GFDA	1/3 oz. fixed cup	2% milk	
5000	GFDA	1/8 oz. fixed cup	or thinner.	
6000	SFDA	1/3 oz. to 1 oz. cup		
Omni Nailaire	GFDA	1/32 oz. fixed reservoir		
Matrix	BF/GF DA	1/16 oz. rotational cup		

BF = Bottom Feed GF = Gravity Feed SF = Side Feed
 DA = Dual Action (Color & Air Controlled with the Trigger)
 SA = Single Action (Air Controlled with Trigger – Color Controlled Separately)

VEGA DETAIL AIRBRUSHES

DUAL ACTION, INTERNAL MIX SERIES

Conceptualized in concert with leading artists—in 1992 Thayer & Chandler revolutionized the airbrush industry by engineering a high volume airbrush with a lighter, more comfortable, streamlined design and an innovative, anti-clogging, cut-away handle feature.

Engineered for easy maintenance, all Vega parts are quickly changeable for little down time. Self-centering, self-sealing fluid tips come in 3 sizes to handle any airbrush application. The rocker lever is attached to the needle tube for easy disassembly, and eliminating loose or shifting parts falling out of the airbrush. A larger contoured one-piece trigger slips easily into place, no more fumbling with two-piece triggers. Each Vega airbrush is tested in actual use, assuring you the best in performance.

FEATURES

- * Self-centering, self-sealing fluid tip
- * Anti-clog, anodized aluminum, cut-away handle
- * Attached back lever for easy assembly
- * Spring adjuster customizes lever tension
- * Stainless steel needles
- * Heavy nickel chrome plating
- * Vega airbrushes are tested in actual use before they leave the factory
- * Adaptable for use with all major brand airbrush jars and color cups
- * One year limited warranty on all components
- * Lifetime labor warranty

VEGA SETS

T61-1 Set contains Vega 2000 airbrush with #1 fine tip, wrench, protective cap, and instruction manual in a corrugated box. **T61-3** with #3 medium tip. **T61-5** with #5 heavy tip.

T63 Complete Airbrush Kit Set contains Vega 2000 airbrush with all three tips/needles/air caps, attachable jar, two additional mixing jars, 1/4 oz. color cup, braided air hose w/varying air source fitting, airbrush holder, wrench, protective cap, and instruction manual in an attractive POP box. **T63K** complete kit with colors.

T75-3 Set contains a Vega 600 Medium Airbrush with a protective cap and instruction manual in a corrugated box.

T76 Set contains a Vega 600 Medium Airbrush with an attachable jar, vinyl hose with a compressor adapter and instruction manual in a corrugated box.

T77 Set Contains a Vega 600 Medium Airbrush with an attachable jar, vinyl hose with a compressor adapter, three 1oz. Jars of MODELflex paints, 4oz cleaner and instruction manual in an attractive POP box.

T86 Set contains Vega 1000 airbrush w/1/8 oz. mounted color cup, #3 medium tip, wrench, protective cap, and instruction manual in corrugated box. **T86K** includes braided hose.

T85 Set contains Vega NailAire airbrush with #3 medium tip and built-in fluid reservoir, airbrush holder, wrench, protective cap, and instruction manual in a convenient storage case. **T85K** includes braided hose.

T85003 Set contains Vega NailAir set T85, compressor w/auto shutoff, nail stencil set, nail video, air hose w/moisture trap, paint set, and instruction manual.



Model	Type/Action	Available Reservoirs	Tip Sizes (All Vegas)	Fluid Viscosity	Spray Pattern
2000	BFDA	1/4 oz. cup to 3 oz. Jar	No. 1 = 0.5 mm	Light	1/64" - 1"
1000 600	GFDA BFSA	Fixed 1/8 oz. cup to 3 oz. Jar	No. 3 = 0.75 mm 1/4 oz. cup No. 5 = 1.0 mm	Medium	1/32" - 1-1/4"
Nailaire	GFDA	1/32 oz. fixed reservoir		Heavy	1/16" - 1-1/2"

BF = Bottom Feed GF = Gravity Feed DA = Dual Action (Color & Air Controlled with the Trigger)
SA = Single Action (Air Controlled with Trigger - Color Controlled Separately)

OMNI SETS

T83 Set contains Omni 3000 bottom feed airbrush with attachable jar, airbrush holder, wrench, protective cap, and instruction manual in a corrugated box. **T83K** Includes braided air hose in a convenient storage case.

T81 Set contains Omni 6000 side feed airbrush with 1/3 oz. side color cup, wrench, protective cap, and instruction manual in a corrugated box. **T81K** Includes braided air hose in a convenient storage case.

T89 Set contains Omni 4000 gravity feed airbrush with 1/3 oz. mounted color cup, airbrush holder, wrench, protective cap, and instruction manual in a corrugated box. **T89K** Includes braided air hose in a convenient storage case.

T88 Set contains Omni 5000 gravity feed airbrush with 1/8 oz. mounted color cup, airbrush holder, wrench, protective cap, and instruction manual in a corrugated box. **T88K** Includes braided air hose in a convenient storage case.

T82 Set contains Omni NailAir airbrush with built-in fluid reservoir, protective cap, and instruction manual in a convenient storage case. **T82K** Includes braided air hose.

T70 Set contains Omni Matrix airbrush with rotational gravity feed/bottom feed color cup/adaptor stem, protective cap, wrench, and instruction manual in a convenient storage case.

MODEL 360

*Photo of Model 360
airbrush on page 2*

360-1: Set contains 360 Universal airbrush with all purpose nozzle/needle, attachable jar; additional jar with cover; trigger pad, protective cap, and instruction manual in a plastic case.

360-2: Set contains 360 Universal airbrush with protective cap, trigger pad, and instruction manual in a corrugated box.

360-7: Set contains 360 Universal airbrush with all purpose nozzle/needle, three mixing jars, two jar adaptors, air hose w/varying air source fitting, trigger pad, protective cap, and instruction manual in an attractive POP box.

360-9: Set contains 360 Universal airbrush with all purpose nozzle/needle, attachable jar; additional jar with cover; extra nozzle/needle, air hose with varying air source fitting, trigger pad, protective cap, and instruction manual in an elegant wooden storage case.

MODEL 155

*Photo of Model 155
airbrush on page 3*

155-1: Set contains 155 Anthem airbrush with all purpose nozzle/needle, attachable jar; additional jar with cover; 1/4 oz (7 ml) color cup, trigger pad, protective cap, and instruction manual in a plastic case.

155-2: Set contains 155 Anthem airbrush with protective cap, trigger pad, and instruction manual in a corrugated box.

155-7: Set contains 155 Anthem airbrush with all purpose nozzle/needle, attachable jar; two additional jars with covers, 1/4 oz (7 ml) color cup, air hose w/varying air source fitting, trigger pad, protective cap, and instruction manual in an attractive triangular box.

155-9: Set contains 155 Anthem airbrush with all purpose nozzle/needle, attachable jar; additional jar with cover; extra nozzle/needle, air hose with varying air source fitting, trigger pad, protective cap, and instruction manual in an elegant wooden storage case.

MODEL 175

*Photo of Model 175
airbrush on page 3*

175-1: Set contains 175 Crescendo™ airbrush with Fine nozzle/needle, 1/4 oz. (7ml) color cup, jar with adaptor; additional jar with cover; trigger pad, protective cap, and instruction manual in a plastic case. 175-2 for Medium. 175-3 for Heavy.

175-4: Set contains 175 Crescendo™ airbrush with Fine nozzle/needle and trigger pad in a corrugated box. 175-5 for Medium. 175-6 for Heavy.

175-7: Complete Airbrush Set

Set contains 175 Crescendo™ airbrush with all three nozzles/needles (Fine, Medium and Heavy), jar with jar adaptor; two additional jars with covers, braided air hose with varying air source fitting, one 1/4 oz. (7ml) color cup, trigger pad, and protective cap, in an attractive triangular display box.

175-8: Six Shooters™ Set

Set contains 6 Medium head airbrushes in a corrugated display box. Excellent choice for "Multi-gun" set ups.

175-9: Set contains 175 Crescendo™ airbrush with medium nozzle/needle, jar w/jar adaptor; extra jar w/cover; braided air hose, heavy nozzle/needle, trigger pad, protective cap, and instruction manual in an attractive wooden storage case.

MODEL 100

*Photo of Model 100
airbrushes on page 4*

100-1: Set contains 100 side feed airbrush with Fine nozzle/needle complete with 1/16 oz. (2ml) self-standing color cup with screw-off bottom, protective cap, wrench for head, and instruction manual in a plastic case. 100-LH-1 for left-handed Fine, 100-2 for right-handed Medium, 100-LH-2 for left handed Medium.

100-4: Set contains 100 airbrush with Fine nozzle/needle and protective cap, one 1/8 oz. (3.5ml) and two 1/16 oz. (2ml) self-standing color cups with screw-off bottoms, Medium nozzle/needle, braided air hose w/varying air source fitting, wrench for head, instruction manual in an elegant wooden case.

100-3: Set contains gravity feed airbrush with Fine nozzle/needle and permanently mounted 1/16 oz. (2ml) color cup, counter-balanced handle, protective cap, wrench for head, and instruction manual in a plastic case. 100-32 for Medium.

100-SLG: Set contains gravity feed airbrush with Fine nozzle/needle and large permanently mounted 1/3 oz. (10.5ml) color cup, friction cap to prevent spillage, counter-balanced handle, wrench for head, and instruction manual in a plastic case. 100-6 for Medium. 100-7 for Heavy

100-8SG: Set contains 100 airbrush with Fine nozzle/needle and built-in fluid cavity, counter-balanced handle, protective cap, wrench for head, and instruction manual in a plastic case. 100-9 for Medium.

MODEL 150

*Photo of Model 150
airbrush on page 5*

150-1: Set contains 150 airbrush with Medium nozzle/needle and attachable jar; additional jar with cover; 1/4 oz. (7ml) color cup, protective cap, wrench for head, and instruction manual in a plastic case. 150-2 for Fine. 150-3 for Heavy.

150-4: Set contains 150 airbrush with Medium nozzle/needle and attachable jar; protective cap, Heavy nozzle/needle, 1/4 oz. (7ml) color cup, additional jar with cover; braided air hose with varying air source fitting, wrench for head, and instruction manual in an attractive wooden storage case.

150-5: Same as 150-4 with additional Fine nozzle/needle.

150-7: Professional Set. Set contains 150 airbrush with Medium nozzle/needle and attachable jar; protective cap, Fine and Heavy nozzle/needles, 1/4 oz. (7ml) color cup, additional jar with cover; braided air hose with varying air source fitting, wrench for head, and instruction manual.

MODEL 200

*Photo of Model 200
airbrush on page 5*

200-1: Set contains 200NH airbrush with general purpose nozzle/needle and attachable jar; protective cap, additional jar with cover; wrench for head, and instruction manual.

200-3: Set contains 200NH airbrush with general purpose nozzle/needle and attachable jar; protective cap, vinyl air hose, Propel™ regulator; Propel™ can, additional jar with cover; head wrench and instruction manual.

200-5: Set contains 200NH airbrush with general purpose nozzle/needle and attachable jar; protective cap, vinyl air hose, Propel™ regulator; wrench for head, and instruction manual.

200-9: Set contains Fine Gravity Feed airbrush with permanently mounted 1/16 oz. (2ml) color cup, protective cap, wrench for head, and instruction manual in a plastic case. 200-10 for Medium.

200-11: Set contains Fine Gravity Feed airbrush with built-in fluid cavity, protective cap, wrench for head, and instruction manual in a plastic case. 200-12 for Medium.

200-20: Set contains Model 200 fine detail airbrush, 1/4 oz. color cup, jar w/jar adaptor; extra jar w/cover; wrench, protective cap, and instruction manual in a plastic case.

MODEL 350

*Photo of Model 350
airbrush on page 6*

350-1: Set contains 350 Fine nozzle airbrush, attachable jar; additional jar with cover; wrench for needle assembly and instruction manual. 350-1M for Medium. 350-1H for Heavy.

350-2: Set contains 350 Medium nozzle airbrush with attachable jar; vinyl air hose, additional jar with cover; Propel™ regulator; wrench for needle assembly and instruction manual.

350-3: Set contains 350 Medium nozzle airbrush with attachable jar; vinyl air hose, additional jar with cover; 1/4 oz. (7ml) color cup, Propel™ regulator; Propel™ can, wrench for needle assembly and instruction manual.

350-4: Set contains Medium airbrush with attachable jar; braided air hose with varying air source fitting, additional jar and cover; 1/4 oz. (7ml) color cup, Fine and Heavy nozzles and fluid assemblies, wrench for needle assembly and instruction manual.

350-9: Set contains Medium airbrush with attachable jar; Propel™ regulator; vinyl air hose, and wrench for needle assembly on blister card.

MODEL 250

*Photo of Model 250
airbrush on page 6*

250-1: Set contains spray gun with attached jar; Propel™ regulator; vinyl air hose, extra jar with cover and instruction manual.

250-2: Set contains spray gun with attached jar; Propel™ regulator; and vinyl air hose on blister card.

250-3: Set contains spray gun with attached jar; Propel™ regulator; vinyl air hose, extra jar with cover; Propel™ can, and instruction manual.

250-4: Set contains mini spray gun with attached 4 oz. (120ml) jar; Propel™ regulator; vinyl air hose, Propel™ can and instruction sheet.

SPECIALTY SETS

TANNING SETS

Get a gorgeous Caribbean Tan...the healthy way without harmful effects from the sun or tanning booths with Totally Tan™ Water Based Airbrush Tanning.

Totally Tan Airbrush Tanning Set (Stock #22-400) includes:

- * Totally Tan T909 Air Star-V Compressor
- * Totally Tan 3000TT Tanning Airbrush with maximum flow handle
- * Totally Tan Dark DHA Tanning Solution (32 ounces)
- * Totally Tan Airbrush Cleaner (16 ounces)
- * Two, 2 ounce dispensing bottles and adapters
- * 10 Foot Recoil Air Hose
- * Totally Tan instruction manual
- * Totally Tan Application Instruction Video
- * Totally Tan Window Poster
- * 12 Totally Tan Consumer Handouts



MODEL 22-1500 TOTALLY TATTOO AIRBRUSH PAINTING & TATTOOING SYSTEM

Set contains: one Anthem airbrush, one T909 Compressor, twelve colors of 4 oz. Totally Tattoo body paint, twelve FastBlast caps, nine Totally Tattoo stencils, sixty application prep pads, one 4 oz. bottle with FastBlast cap, and one recoil air hose.

MODEL 54-3100 COMPLETE SALON TEMPORARY TATTOO, TANNING & NAIL PAINTING KIT

Set contains: one Anthem airbrush with a quick disconnect, one 3000TT airbrush with quick disconnect, one Vega Nailaire airbrush with quick disconnect, one T909 compressor, one eight foot hose with quick disconnect, twelve colors of 4 oz. Totally Tattoo body paint, twelve FastBlast caps, nine Totally Tattoo stencils, sixty application prep pads, two 1 oz. bottles of Nail Extender, thirty-two 1 oz. Nail Flair colors, forty-eight nail stencils, one 1/2 oz. bottle of Nail Flair top coat, one 4 oz. bottle of Nail Flair cleaner, 1/2 gallon of dark DHA tanning solution, two 2 oz. jars with adapters, and one tanning application instruction video.

CRAFT SETS

Both beginning and advanced crafters will find a Badger craft set to satisfy their creative desires. Each set contains everything needed to start airbrushing right out of the box.



MODEL 250-5 BASIC SPRAY GUN CRAFT SET

Set contains a 250 spray gun with attached 3/4oz. (22ml) jar; Propel™ can, three Neon fabric paints, vinyl air hose, Propel™ regulator; five pre-cut stencil designs, and a complete "how-to" instruction booklet. Great for kids age 8 and up.

Model 250-5

MODEL 350-6 COMPLETE CRAFT SET

Set contains a 350 airbrush with attachable 3/4oz. (22ml) jar; vinyl air hose, Propel™ regulator; Propel™ can, mixing jar with cover; three reusable stencil designs, two sheets of airbrush paper; five Air-Tex™ colors, one Air-Tex™ cleaner; and "how-to" booklet.

Model 350-6



HOBBY SETS

Hobbyists, both novice and advanced, will find a Badger hobby set perfect for their individual skill level.



MODEL 250-7 BASIC SPRAY GUN HOBBY SET

Set contains a 250 spray gun with attachable 3/4oz. (22ml) jar; vinyl air hose, Propel™ regulator; Propel™ can, mixing jar with cover; three MODELflex™ colors, 32 page "how-to" book, one mixing pipette, and instruction book.

Model 250-7

ILLUSTRATOR SETS

Whether you are a student, or an experienced airbrush artist, you'll find these sets ideal. Each set comes with suggested practice lessons to familiarize you with the airbrush and accessories.

MODEL 100-34 (100-35 AND 100-36)

Set contains 100 G dual action, gravity feed, internal mix airbrush, Recoil™ air hose, seven 1 oz. (30ml) Air-Opaque™ colors, one 1oz. (30ml) Air-Opaque™ cleaner, one roll Foto/Frisket™ Film, five sheets Brite White™ paper, two sheets of Brite White™ printed with geometric shape exercises, two laser-cut template rulers, cutting knife and instruction book. Model 100-35 same as the 100-34 set, except with 100 SG airbrush. Model 100-36 same as 100-34 except with 100 LG airbrush.

SPECIALTY SETS

FINGERNAIL PAINTING SETS

Fingernail painting is made easy with professional results by simply following the "how-to" - 1, 2, 3 - steps on the back of each sleeve.



MODEL 100-13 AND 100-14

Set contains a dual action, gravity feed 100 SG airbrush with Medium (M) nozzle/needle, two 1oz. (30ml) colors for fingernails, Propel™ regulator, vinyl air hose, Propel™ can, Foto/Frisket™ Film, laser-cut stencil designs, and instruction book. Model 100-14 includes 30 minute instructional videotape. (#BV004)

MODEL 200-13 AND 200-14

Model 200-13 is the same as the 100-13, except it contains the single action 200 SG airbrush with Medium (M) nozzle/needle. Model 200-14 also includes instructional video. (#BV004)

MODEL 10-1200

Set contains one Vega Nailaire airbrush, one T909 compressor; one recoil air hose, twelve 1 oz. Nail Flair colors, one 1 oz. bottle of Nail Flair Extender, one 16 oz. bottle of Nail Flair

cleaner, eight nail stencil wheels, and three 1/2 oz. bottles of Nail Flair top coat.

CERAMIC SETS

Whether you're a novice or seasoned ceramist, you'll find Badger has the ceramic set perfect for you. Each set includes a detailed instruction book with learning exercises.

MODEL 250-8 GLAZE GUN SET

Set contains a Model 250 mini spray gun with attached 4oz. (120ml) jar; extra jar cover, and heavy-duty braided air hose with varying air source fitting in a durable corrugated storage box.

MODEL 350-8 CERAMIC SET

Set contains a Model 350 airbrush with a Medium (M) fluid tip and needle assembly, attachable jar; extra jar cover, additional jar with cover, heavy-duty braided air hose with varying air source fitting, and head wrench in a durable corrugated storage box.

MODEL 200-8 DELUXE CERAMIC SET

Set contains a Model 200 airbrush with Heavy (H) nozzle/needle and attachable jar; protective cap, extra jar cover; additional jar with cover; heavy-duty braided air hose with varying air source fitting and wrench in a durable corrugated storage box.

MODEL 150-8 PROFESSIONAL CERAMIC SET

Set contains a Model 150 airbrush with a Medium (M) nozzle/needle, attachable jar; protective cap, Heavy (H) nozzle/needle, 1/4oz.(7ml) color cup, additional jars with cover; heavy-duty braided air hose with varying air source fitting, and head wrench in a durable corrugated orange box.



200-8

TAXIDERMY SETS

Choose the set which best meets your skill level and needs. From beginner to professional, Badger has the taxidermy set for you.

MODEL 150-15 (200-15 AND 350-15)

150 set contains a 150 dual action, bottom feed, internal mix airbrush with attachable jar, vinyl air hose, Propel™ regulator; two 1oz. (30ml) bottles of paint, Propel™ can, color selection chart and an instruction sheet on lure painting. Model 200-15 same as Model 150-15, but with a 200 single action, internal mix airbrush. Model 350-15 is the same as Model 150-15, but with a 350 single action, external mix airbrush.



Ceramic art by: Joyce Sheets



Sculpture and finishing by: Clark Schreibeis

COMPLEMENTARY ACCESSORIES

FOTO/FRISKET™ LOW TACK MASKING FILM

The ideal transparent, self-adhering masking material, specially designed for easy lift-off. It will not lift the surface of already completed work. Foto/Frisket™ leaves no residue after removal, and cuts with ease. Used by fine artists, illustrators, photo retouchers and others who require precise masking technique.

FEATURES

- * Matte finish will accept pencil
- * Translucent backing for easy stencil and mask cutting on light boxes
- * Available in Gloss or Matte finish
- * Will not buckle along film edge, thus preventing underspray
- * Long shelf life



10 sheet pack, 8" x 11" (20.52cm x 27.94cm) Gloss #600, Matte #601
 100 sheet pack, 8" x 11" (20.52cm x 27.94cm) Gloss #605, Matte #606

Rolls of 12" x 14' (30.48cm x 3.556m) Gloss #610, Matte #611
 Rolls of 24" x 14' (60.98cm x 4.556m) Gloss #620, Matte #621



STENCIL CUTTING KNIFE

For cutting stencils and Foto/Frisket™, and trimming molding off plastic model parts. Includes plastic safety cover. (# 120)

NO-TACK™ (NON-ADHESIVE) STENCIL FILM

Cut personalized, reusable stencils on this smooth, non-porous, "vellum-like" surface. You can render in nearly all media - airbrush, paint brush, sponge, marker, pencil, pastels, oils, acrylics, etc. Won't tear or stretch out of shape and is highly resistant to most solvents. No-Tack™ leaves no ghosting and permits redrawing without feathering.

FEATURES

- * Cuts easily; will not tear or crack
 - * "Vellum-like" finish, non-yellowing
 - * Dimensionally stable
 - * Reusable and durable mylar
 - * No ghosting or feathering on redraws
 - * Will not curl...lays flat
- | | |
|---|-------|
| 10 sheet pack, 8 1/2" x 11" (21.59cm x 27.94cm) | #46-1 |
| 10 sheet pack, 11" x 17" (27.94cm x 43.18cm) | #46-2 |
| 12" x 15' roll (30.48cm x 4.572m) | #46-3 |
| 100 sheet pack, 8 1/2 x 11" (21.59cm x 27.94cm) | #46-5 |
| 100 sheet pack, 8 1/2 x 17" (21.59cm x 43.18cm) | #46-6 |

AIRBRUSH TEMPLATES

Produce a cleaner, sharper edge with Badger's flexible, washable, and durable laser-cut templates (thinner than conventional drafting templates). Each template includes positive and negative shapes. Excellent for technical illustration, photo retouching, architectural rendering, and special effects. The template may be held in place with adhesive, weights, or magnets. Available in sets of four with varying sizes of ellipses and circles.

- 3/8" to 3" Circles Neg/Pos..... #47-1
- 1" to 2" Ellipses Neg/Pos..... #47-2
- 3" Ellipse Neg/Pos..... #47-3
- 4" Ellipse Neg/Pos..... #47-4



DECORATIVE STENCILS

Decorate anything imaginable with these thin, flexible, washable, laser-cut stencils. Ideal for any stenciling technique including sponges, markers, paint brushes, and airbrushes. Each stencil comes in an 8 1/2" x 11" sheet.

Balloons and Clouds #45-60, Wacky Stars & Planet #45-61, Angel Fish #45-62, Sports Car #45-63, Tiger #45-64, Teddy Bear #45-65, Value Pack Set #45-68: contains 4 stencils - Balloons and Clouds, Wacky Stars & Planet, Angel Fish and Teddy Bear.

MINIATURE STENCILS

Create miniature airbrushed designs quickly and accurately with these laser-cut stencils. Miniature Stencil Set #48-1 contains four stencil wheels

featuring a variety of designs. Stencils are washable, reusable, and an ideal way to produce glamorous, trendsetting airbrushed fingernails, jewelry, etc. 48 wild & glamorous stencils sold separately.

NEW



TOTALLY TATTOO PARTY ART

Body Stencil Sets repositionable, reusable, low-tack adhesive backed stencils.

NEW

COMPLEMENTARY ACCESSORIES

STENCIL FOLIOS

For the beginner or experienced airbrusher; these folios supply everything needed to teach and create craft projects. Each folio includes complete instructions, pattern designs, reusable Badger stencil film and color progression charts. "The Cowboys", #45-1 and "The Carousel Horse", #45-4 by Cindy McCown. "The Rose", #45-3 and "The Mask", #45-2 by Lindy Brown.



BRITE WHITE™ AIRBRUSH PAPER

Extremely bright white surface adds vividness to airbrush colors. Composed of durable 50% rag, 145lb. sulfate, Brite White™ is usable on both sides and accepts all airbrush media. Sheets of 18" x 24" (45.72cm x 60.95cm) is available in a medium texture cold press (#651) surface. Ten sheets come packaged in a reusable protective chipboard envelope.

AIRBRUSH LEARNING KITS

Whether you're just learning to airbrush or want to sharpen your airbrush skills, BADGER offers an airbrushing exercise kit to meet your developmental needs.

BASIC AIRBRUSH EXERCISE KIT, BW101

- * Cutting knife
- * Dust mask
- * 4 basic exercises on Brite-White paper
- * Bright white sheets (8 1/2 x 11)
- * Foto/Frisket™ film (8 x 11)
- * Air-Opaque™ black 1 oz. (30ml)
- * Air-Opaque™ Scarlet 1 oz. (30ml)
- * Air-Opaque™ cleaner 1 oz. (30ml)



INTERMEDIATE AIRBRUSH EXERCISE KIT, BW 201

- * Cutting knife
- * Dust mask
- * 4 intermediate level exercises on Brite-White paper
- * Bright white sheets (8 1/2 x 11)
- * Foto/Frisket™ film (8 x 11)
- * Air-Opaque™ Primary Set (No. 701)
- * Air-Opaque™ cleaner 1 oz. (30ml)



BOOKS

Self-instruction comes to life in these step-by-step, full color books covering a wide range of interests.



Anyone Can Airbrush by Lindy Brown and Mollie Perry. Techniques, tips and 7 airbrush design projects with "how to" instructions. #50-2020

Volume II Airbrushing Techniques for Custom Painting

This 48 page book contains hundreds of step-by-step, color photos with details on projects such as motorcycle tanks, surface prep and graphics. #510

Hobby and Craft Guide to Airbrushing

A 32 page guide, includes 21 "how-to" sections on prepping for painting, camouflage, weathering, etc. #500

Step by Step Modelers Guide to Airbrushing by Susan Harris and Evan Roark

A 32 color page book on military modeling, figure and diorama painting. Includes important tips to help you bring realism to your scale models. #505

VIDEOTAPES

What better way to learn than by watching the pros demonstrate their techniques, then playing back the lesson and learning at your own pace. These videos, approximately 30 minutes in length, are perfect for classroom instruction as well. Skill levels range from beginner to advanced, and subject matter covers various airbrush applications. Available in PAL & NTSC.

- Introduction to Airbrushes, Accessories, and Airbrushing Mediums # BV001
- Vol. I The Fundamentals of Airbrush Technique: Basic Exercises # BV002
- Vol. II Intermediate Airbrush Technique: Working in Color # BV003
- Vol. I The Art of Airbrushing Fingernails: A Basic Course # BV004
- Vol. II The Art of Airbrushing Fingernails: Advanced Design Techniques # BV005
- Vol. I T-Shirt and Fabric Airbrushing: Techniques for Getting Started # BV006
- Vol. II T-Shirt and Fabric Airbrushing for the Intermediate Artist # BV007
- The Art of Airbrushing Wildfowl Carvings # BV020
- Cake Decorating with the Airbrush #BV008
- Basic Model Painting with the Airbrush #BV009
- Tips, Tricks, & Airbrush Techniques for Super Detailing Models #BV010
- Aging and Weathering Models (and stuff) with the Airbrush #BV011
- Tanning Application Instruction #22-424

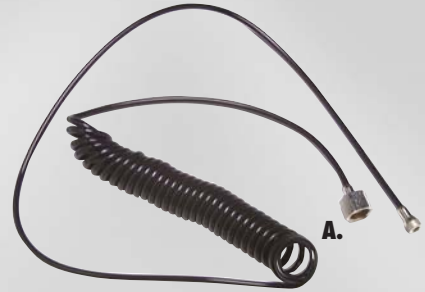


NEW

COMPLEMENTARY ACCESSORIES

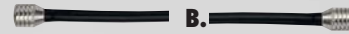
A. RE-COIL™ FLEXIBLE AIR HOSE

Stretches to maximum length of 10ft/3.05m. (# 50-4011) for Badger and Thayer-Chandler airbrushes. (# 50-4012) for Paasche and Binks airbrushes.



B. FLEXIBLE, LIGHT WEIGHT AIR HOSE

Available in 5ft (1.9m) #50-011 and 8ft. (3.05m) #50-0011 lengths. Not recommended for continuous use with a compressor. #50-0011 includes 1/4" (6.4mm) Pipe Thread Fitting Adaptor (#50-023).



C. HEAVY-DUTY BRAIDED AIR HOSE

Durable rubber air hose in braided fiber "housing." Swivel connection for airbrush at one end and varying air source connector fitting at opposite end. Available in 10ft. (3.05m) length #50-2011, 6ft.(1.83m) length w/in-line moisture trap (50-2014) #50-2022, 10ft.(3.05m) length w/in-line moisture trap (50-2014) #50-2025, 8ft.(2.44m) length w/airbrush quick connect fitting #50-2018, 10 ft.(3.05m) length w/ 1/4" female fitting at both ends (for Model 400 only) #50-3011.



TRANSPARENT VINYL AIR HOSE (not pictured)

Flexible clear air hose enables the airbrush user to detect any moisture or impurities in the air line, thus preventing any related mishaps or work disruption. Swivel connection for airbrush at one end and varying air source connection at opposite end. Recommended for use up to 50 PSI. Available in 10ft.(3.05m) length #50-2030, 6ft.(1.83m) length w/ in-line moisture trap(50-2014) #50-2026, 10ft.(3.05m) length w/ in-line moisture trap(50-2014) #50-2021, 8ft.(2.44m) length w/no fittings at either end (for use with 80-3 bakery compressor only) #50-1011.



D. 1/4" (6.4MM) PIPE THREAD FITTING ADAPTOR

Adapts air hose to compressor or CO2 tank (# 50-023).

E. TRANSPARENT IN-LINE DRAINABLE MOISTURE TRAP

For use with Badger braided or transparent air hose and compressor. Filter only (# 50-2014).



F. BADGER PROPEL™ REGULATOR

Made of high-impact nylon, with metal parts. Regulates on/off for Propel™ (# 50-200).



G. SPARE TIRE VALVE ADAPTOR

To use a spare tire for pressure, insert the adaptor into the Propel™ regulator valve (# 50-200) and attach to spare tire. Note: tire must be on a rim and inflated to 40lbs. (2.75 bar) of air pressure (# 50-029).



H. PROPEL™ PROPELLANT

Excellent starting air source or short usage alternative air source for use with all types and makes of airbrushes. Contains no CFC's and does not promote ozone depletion. Available in Regular, (# 50-002) and Economy Size, (# 50-202).



I. AIRBRUSH HOLDER

Holds two airbrushes of any make or model. Allows easy access to your airbrushes; eliminates dropping of airbrush and paint spills. Clamps securely to any drafting table, desk or taboret edge (up to 2" 5cm thick). (# 125)

J. DOUBLE CARTRIDGE RESPIRATOR

Provides protection against paint mists and vapors. Double cartridge provides easier breathing over single cartridge masks. It has a built-in anti-bacterial agent and cleans easily (# 190-1). Replacement Cartridge (# 190-2). Respirator Pre-Filter (# 190-3).



K. DUST MASK

Disposable dust mask for use with waterbased paints and abrasive materials (package of 2, #50-273).



L. MODEL 135 SPRAY BOOTH

Portable, lightweight with more than 1.66 cubic feet (47L) of protected spray area to eliminate overspray mess, fumes, and odors. 20" long x 12" high x 12" deep (50cmx30cmx30cm) with 8" x 5" plexiglass top mounted window for more direct light. Made of easy to clean translucent polypropylene and weighs only 10.5lbs. (4.7 kg). Includes powerful 1/25 horsepower, 3100 RPM (140 cfm) inductance shaded pole blower with replaceable filter, plus complete instructions for venting. Available in 110 volts only.



M. AIRBRUSH GLOVE

Wear while airbrushing to prevent fatigue and carpal tunnel syndrome. Available in Right-Hand Medium (# 124RM), Right-Hand Large (# 124RL), Left-Hand Medium (# 124LM), and Left-Hand Large (# 124LL).



N. REGDAB NEEDLE JUICE AIRBRUSH LUBRICANT

Enhances smooth trigger action and eliminates needle friction due to dry paint build up (# 122).





NEW

O.

O. HOBBY PAL – Suction Pick-Up Tool

The Hobby Pal is a must for handling small items! The Hobby Pal is recommended for any object that has a smooth, non-porous surface. It will handle glass, plastic, jewelry, metal, decals, stones, coated paper, coated cardboard, puzzle pieces, etc. Assorted cups and tips included.

P.



NEW

P. MODEL PAL – Suction Handling Tool

An ideal tool for precision assembly projects. Fun! Handy! Helpful! Great tool for model cars, crafts, railroading, doll houses, applying decals, stained glass, model airplanes, crafts of all kinds! The Model Pal will become one of your favorite assembly tools. Assorted cups included.

Q.



NEW

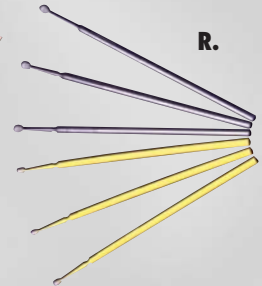
Q. SPOT TOUCH-UP PREP PEN/

A concentrated density fiberglass bristle pen, perfect for “sanding” and smoothing small spots prior to touching them up. Can be used to remove rust, dirt, and corrosion from project surfaces prior to finishing. Fiberglass bristles extend/retract like a mechanical pencil tip.

NEW

R. JUST-A-DAB APPLICATORS

A durable textured plastic stem with color controlling micro-fibre tip. Washable and reusable.



R.

S. PAINT MIXER

Thoroughly mixes all types of paint. Evenly disperses pigment in its base material to assure consistent viscosity of paint from top of the bottle to the bottom (# 121). (Requires 2 AA Batteries, not included.)



S.

T. COUNTER-BALANCED HANDLE

Designed for use with 100 and 150 dual action models. Made of solid brass and chrome plated, provides superior balance (# 50-0332).

T.



U.

U. IN-JAR FLUID FILTER

Designed for use with all siphon-fed airbrushes. Helps prevent airbrush clogs by filtering out large particle matter or oversized pigments. For use with new #50-009 siphon tube, (# 50-2017). Old filter for use with #50-025 siphon tube, (# 50-2016).

V. PAINT JARS WITH COVERS

Glass jars fit 150, 155, 175, 200, 250, 350 & 360 Model airbrushes. Available in 2oz/60ml (# 50-0053) and 3/4oz/22ml (# 50-0052) sizes. 4oz/120ml paint jar (not pictured) with cover fits Model 250-4 (# 50-267) and Model 260 (# 50-267).

V.



W.

W. (33MM) 3OZ./90CC PLASTIC JAR

Jar only with plain lid (# 51-0054). Jar with adaptor #50-208 attached, (# 51-0055). Jar with #50-308 adaptor attached, (# 51-0056).

X. (33MM) 150, 155, 175, 200 & 360 FASTBLAST JAR ADAPTOR 30° angle configuration for proper alignment with Model 150, 155, 175, 200 & 360 airbrushes. Fits all three size jars. (# 50-208). Metal jar adaptor (#50-208M).

X.



Y.



Y. (33MM) 350 FASTBLAST JAR ADAPTOR Angles 60° for proper 350 airbrush balance. Fits all three size jars. (# 50-308). Metal jar adaptor (#50-308M).

Z. JAR ADAPTORS FOR AIR-OPAQUE™ AND AIR-TEX™ BOTTLES

For Model 150, 155, 175, 200 & 360 airbrushes with 1oz. siphon tube (Fastblast # 51-017. Metal #51-017M). For Model 350 airbrush with 1oz. siphon tube (# 51-018). For Model 150, 155, 175, 200 & 360 airbrushes with 4oz. siphon tube (Fastblast, # 51-019. Metal #50-019M). For Model 350 airbrush with 4oz. siphon tube (Fastblast # 51-020. Metal #51-020M). Gasket for 20mm cap adaptor (# 51-012).

Z.



AA.



AA. CROWN REGULATOR

For models 100, 150, and 200, helps to reduce build-up of heavy viscosity coatings on spray regulator surface edge. FINE (# 51-033). MEDIUM (# 51-034). HEAVY (# 51-035).

BB. COLOR CUPS

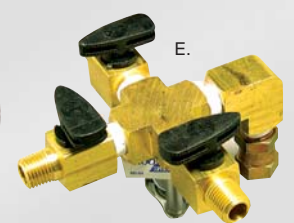
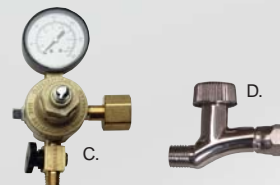
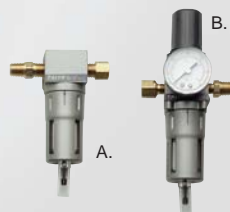
Self standing color cups for Models 150, 155, 175 & 200 airbrushes, 1/4 oz/7ml (#50-0482). For Model 350 airbrush, 1/4 oz/7ml (#50-0483) for Model 100 side feed-color cups with screw off bottom for easy cleaning, 1/16 oz/2ml (#50-047) and 1/8 oz/3.5ml (#50-048).



BB.

COMPRESSOR COMPATIBLES

- A. Air Filter and Water-Trap for air compressors. (# 50-051)
- B. Air Regulator; Filter and Gauge for air compressors. (# 50-054)
- C. CO₂ Regulator with Gauge for use with CO₂ tank only. (# 50-057)
- D. Mini Regulator (#50-2035)
- E. Manifolds (#50-100 2 hookup), (#50-101 3 hookup), (#50-102 4 hookup), (#50-103 5 hookup), (#50-104 6 hookup)
- F. Quick disconnects available (not pictured).



AIRBRUSH COMPRESSORS



WHIRLWIND II MODEL 80-2 **

Designed for portability and cost effectiveness, it is lightweight, quiet and can be carried from place to place. It has a 6ft. (1.8m) cord with a three-pronged plug. This compressor is virtually maintenance free, oil-less and never needs lubrication. It operates one airbrush of most makes. Maximum running pressure Approx. 28 PSI. (1.93 bar). CSA approved.

80-2

Additional Specifications

- * Horsepower: 1/20 HP
- * Motor: 115 volts, 60, 2.5 amp
- * Dimensions: 8"L x 4 1/2"W x 5"H (20x11.5x13cm)
- * Shipping Weight: 5 lbs. (4.53 kg)

CYCLONE I MODEL 180-I **

Portable 1/12 HP oil-less diaphragm type compressor has internal bleed, allowing use with any make airbrush. It is compact, lightweight and quiet and can be carried from room to room. Maximum running pressure Approx. 33 PSI (2.27 bar)..

180-I

Additional Specifications

- * Motor: 115 volts, 60 Hz, 2.5 amp
- * Dimensions: 8 1/4"L x 4 3/4"W x 7"H (21x12x18cm)
- * Shipping Weight: 9 lbs. (4.08 kg)
- * 22.5L/min@1.38 bar



CYCLONE II MODEL 180-II

Has the same features as the Cyclone I, but it has a built-in, automatic shut-off. By releasing the trigger of your airbrush, this model will automatically shut off until the trigger is depressed again. Maximum running pressure Approx. 33 PSI (2.27 bar). CSA approved.

180-II

Additional Specifications

- * Horsepower: 1/12 HP
- * Motor: 115 volts, 60 Hz, 3.5 amp
- * Dimensions: 9"L x 4 3/4"W x 7"H (23x12x18cm)
- * Shipping Weight: 11 lbs. (4.98 kg)
- * 22.5L/min@1.38 bar

TORNADO MODEL 180-22

This 1/8 HP compressor is efficient, dependable and oil-less. It comes with an air regulator and gauge. Will operate 2 airbrushes. It also has a removable intake filter and on/off switch. Maximum running pressure Approx. 40-50 PSI (2.75-3.4 bar).

180-22

Additional Specifications

- * Motor: 115 volts, 60 Hz, 5.0 amp
- * Dimensions: 8"L x 5"W x 8 3/4"H (20x13x22cm)
- * Shipping Weight: 12 lbs. (5.44 kg)
- * 26 L/min@1.38 bar .93 cfm@ 20 PSI
- * 19L/min@3.45 bar .67 cfm@50 PSI



BAKERY MODEL 80-3

Low pressure, diaphragm compressor, ideal for the delectable needs of cake decorators. Lightweight, portable, features an on/off switch. **To be used with 100GB bakery airbrush only.**

80-3

Additional Specifications

- * Max Pressure: 10 PSI
- * Running Pressure: 3-5 PSI
- * 5 watts
- * Dimensions: 4-3/4"x3-1/4"x2"
- * Shipping Weight: 2 lbs

THAYER & CHANDLER COMPRESSOR



AIR STAR VT909

- * Automatic shut-off piston compressor:
- * On-off switch
- * Adjustable air regulator and pressure gauge
- * Built-in moisture filter:
- * Quiet and lightweight.
- * Built-in airbrush holder:
- * Maintenance free and oil-less.
- * Thermal overload protection.
- * 1/8" Horsepower
- * Maximum pressure 40 psi.
- * 12"L x 6"W x 8"H.
- * Shipping weight 15 lb.

NEW

SILENT COMPRESSORS

All silent compressors are powered by a highly efficient, oil reciprocating piston motor. All three extremely quiet units share the following features:

- * Automatic on/off pressure switch.
- * Thermal overload protection.
- * Adjustable air regulator:
- * Moisture trap.
- * Gauge for line pressure.
- * Pressure release safety valve.
- * Manual on/off valve.
- * Intake air filter.

NOTE: Silent Compressors are not recommended for production T-shirt painting. ***Compressors need a manifold to operate more than one airbrush at the same time.

MILLION-AIR MODEL 480-1***

The 480-1 is powered by a 1/4 HP motor and has a .45 gallon (1.70ltr) tank which develops 19.8L/min .70 CFM at 126 PSI (8 bar). Will operate up to two airbrushes.

480-1

- Additional Specifications
- * Max Pressure: 116 PSI (8 bar)
 - * Motor: 115 Volts/60 hz AC 1.72 amps
 - * Dimensions: 17-1/4"L x 13-1/2"H x 8-1/2"W (44.5cm x 34cm x 21cm)
 - * Shipping Weight: 45 lbs. (16.8 Kg)



BILLION-AIR MODEL 480-2***

The 480-2 is powered by a 1/3 HP motor and has a 1.06 gallon (4.0ltr) tank which develops .90 CFM at 116 PSI (8 bar). Will operate up to three airbrushes.

480-2

- Additional Specification
- * Max Pressure: 116 PSI (8 bar)
 - * Motor: 115 Volts/60 hz AC 2.73 amps
 - * Dimensions: 18"L x 8-1/2"W x 18"H (45.5cm x 21cm x 45.5cm)
 - * Shipping Weight: 55 lbs. (20.9 Kgs)

TRILLION-AIR MODEL 480-3***

The 480-3 is powered by a 1/2 HP piston motor and has a 1.06 gallon (4.08ltr) tank which develops 1.75 CFM 49.5L/min at 116 PSI (8 bar). Will operate up to five airbrushes.

480-3

- Additional Specifications
- * Max Pressure: 116 PSI (8 bar)
 - * Motor: 115 Volts/60 hz AC 4.8 amps
 - * Dimensions: 18"L x 8-1/2"W x 18"H (45.5 cm x 21 cm x 45.5cm)
 - * Shipping Weight: 67 lbs. (24 kgs)



Silent compressors are not recommended for heavy duty T-Shirt painting.

COMPRESSORS

MODELflex™ PAINTS

PAINT FOR THE PROFESSIONAL MODELER

If you're not satisfied until every detail is perfect, then let MODELflex™ bring your models to life. It is a superior hobby paint designed to help modelers achieve authentic, professional painting results, with greater ease and proficiency. Waterbased MODELflex™ is easy to apply with an airbrush or paint brush and clean-up is fast and easy with MODELflex™ cleaner. MODELflex™ paint dries in 12 to 15 minutes at room temperature (3 to 5 minutes if heat dried). With 120 authentic colors to choose from, MODELflex™ has you covered no matter what you model.

FEATURES

- * Available in 1oz. (30ml) plastic bottles
- * Made of high-quality organic pigments for superior color retention and color fastness
- * MODELflex™ offers extreme fine-coat coverage without concealing intricate details
- * Primers are not required with most colors (primers are recommended with lighter colors)
- * Superior adhesion to most plastics, resins, metals and various other substrates.

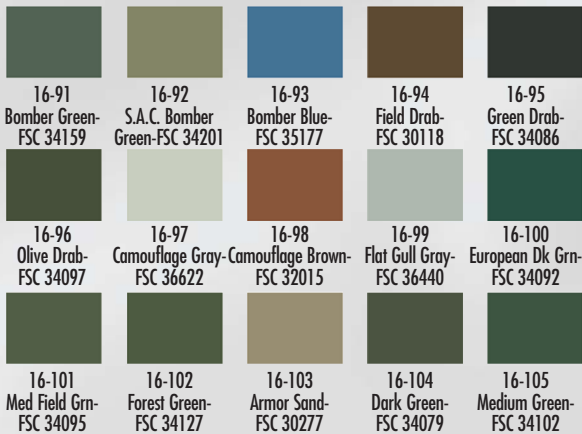
- * Paint may be removed with MODELflex™ cleaner within five minutes of application
- * Decaling and detailing may begin in 15 minutes if heat dried
- * Environmentally friendly, safe to use, non-flammable, non-carcinogenic
- * Various rack assortments are available to retailers
- * Paints may be special ordered in 1 quart (0.94 ltr.) and 1 gallon (3.78 ltr.) sizes
- * Three clear coats available: Flat #16-601, Satin #16-602 and Gloss #16-603, plus Extender #16-600
- * MODELflex cleaner is available in three sizes; 1 oz. (30ml) 16-604, 4 oz. (120ml) 16-605, and 16oz (480ml) 16-606 and may be special ordered in 1 quart (0.94 ltr.) and 1 gallon (3.78 ltr.) sizes
- * Decal Setting Solution: Softens decal film, allowing it to stretch over details for best appearance. Prevents air bubbles and results in an invisible carrier film, reducing silvering #16-801.
- * Decal Softening Solution softens decals and improves adhesion #16-802.

- * Liquid Decal Film allows you to create your own decals by brushing it on a flat clean surface. Allow to dry and draw or paint on your image. Can save old decals when brushed over an old decal and provides a new surface #16-803.

AVAILABLE IN THE FOLLOWING SEVEN BOTTLE SETS

- RAILROAD ROLLING STOCK #1701;
 Engine Black, Reefer White, Reefer Gray, Reefer Yellow, Reefer Orange, Dark Tuscan Oxide Red, Light Tuscan Oxide Red
 WEATHERING AND RAILROAD OFF LINE COLORS # 1702:
 Weathered Black, Antique White, Primer Gray, Concrete Gray, Signal Red, Light Green, Sand
 RAILROAD PRIVATE CAR COLORS #1703:
 Caboose Red, Rail Box Yellow, Mo Pac Blue, Pullman Green, Super Gloss Black, Santa Fe Silver, Maroon Tuscan Oxide Red
 MILITARY COLORS #1704:
 Forest Green, Olive Drab, European Dark Green, Armor Sand, Field Drab, Medium Green, Camouflage Gray
 AUTOMOTIVE COLORS #1705:
 Gloss Black, Gloss White, Gloss Red, Gloss Blue, Gloss Brown, Gloss Yellow, Gloss Green

MODELflex™ PAINTS military colors

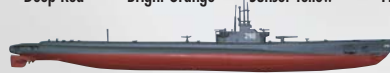


MODELflex™ PAINTS automotive colors



MODELflex™ PAINTS

marine colors



Due to limitations of four color printing process, colors shown may not be an identical match.



MODELflex™ PAINTS railroad colors

16-01 Engine Black	16-02 Reefer White	16-03 Grimy Black	16-04 Reefer Gray	16-05 Weathered Black	16-06 Antique White	16-07 Signal Red	16-08 Caboose Red	16-09 Reeder Orange	16-10 Reefer Yellow	16-11 Concrete Gray	16-12 Primer Gray
16-13 Dark Tuscan Oxide Red	16-14 Light Tuscan Oxide Red	16-15 Maroon Tuscan Oxide Red	16-16 Brunswick Green	16-17 Pullman Green	16-18 Soo Line Maroon	16-19 Soo Line Deluxe Gold	16-20 Super Gloss Black	16-21 Pennsy Green	16-22 Pennsey Maroon	16-23 C&NW Dark Green	16-24 U.P. Armor Yellow
16-25 U.P. Harbor Mist Gray	16-26 Burlington Northern Green	16-27 NYC Gray Dark 1	16-28 NYC Gray Light 1	16-29 Conrail Blue	16-30 Sand	16-31 Santa-Fe Red	16-32 Santa-Fe Silver	16-33 Santa-Fe Yellow	16-34 Santa-Fe Blue	16-35 So. Pacific Lark Light Gray	16-36 So. Pacific Daylight Red
16-37 So. Pacific Scarlet Red	16-38 So. Pacific Daylight Orange	16-39 So. Pacific Letter Gray	16-40 So. Pacific Lark Dark Gray	16-41 So. Pacific Armor Yellow	16-42 Milwaukee Orange	16-43 Milwaukee Maroon	16-44 Milwaukee Gray	16-45 Milwaukee Brown	16-46 Southern Sylvan Green	16-47 Light Green	16-48 Weyerhaeuser Yellow Green
16-49 CSX Blue	16-50 Insignia Yellow	16-51 Erie Lack Gray	16-52 Erie Lack Yellow	16-53 Erie Lack Maroon	16-54 Rail Box Yellow	16-55 C&NW Old Yellow	16-56 C&NW New Zeto Yellow	16-57 Soo Line Red	16-58 Amtrak Red	16-59 Amtrak Blue	16-60 B&M Blue
16-61 D&R.G.W. Orange	16-62 D&R.G.W. Gold	16-63 Great Northern Big Sky Blue	16-64 GN Orange	16-65 GN Green	16-66 Grand Trunk Western Blue	16-67 B&O Royal Blue	16-68 C&O Yellow	16-69 C&O Enchantment Blue	16-70 CSX Gray	16-71 Wisconsin Central Maroon	16-72 Wisconsin Central Cream
16-73 Illinois Central Orange	16-74 Illinois Central Brown	16-75 GMO Red	16-76 D&H Blue	16-77 Northern Pacific Light Green (1947)	16-78 Northern Pacific Yellow	16-79 Rock Island Blue	16-80 Katy Green	16-81 Katy Yellow	16-82 LN Blue	16-83 LN Gray	16-84 LN Yellow
16-85 Reading Green	16-86 MoPac Blue	16-87 DM&IR Maroon	16-88 DM&IR Yellow	16-89 Western Pacific Orange	16-90 Penn Central Green	16-151 BNSF Green	16-152 BNSF Orange	16-153 CB&Q Chinese Red	16-154 CB&Q Gray	16-155 Wabash Blue	16-156 Wabash Gray
16-157 Frisco Orange	16-158 CP Action Yellow	16-159 CP Action Red	16-160 CP Tuscan Red	16-161 CP Yellow	16-162 CP Gray	16-163 CN Red #11	16-164 CN Green #11	16-165 CN Orange #10	16-166 CN Yellow #11	16-167 CN Gray #11	16-168 Trailer Train Yellow
16-169 MO Pac Eagle Blue	16-170 MO Pac Eagle Roof Gray	16-171 MO Pac Eagle Gray	16-172 Rust	16-173 Mud	16-174 Earth	16-175 Rail Brown	16-176 Roof Brown	16-177 New Haven Hunter Green	16-178 New Haven Warm Orange	16-179 New Haven Imitation Silver	16-180 New Haven Pullman Green
16-181 New Haven Imitation Gold	16-182 New Haven Red-Orange	16-183 New Haven Socony Red	16-184 Lehigh Valley Cornell Red	16-185 SAL Pullman Green	16-186 AC Imitation Aluminum	16-187 C&NW Red	16-188 D&H Gray	16-189 B&M Maroon	16-190 B&O Dulux Gold	16-191 Pullman Harbor Mist Gray	16-192 Western Pacific Green
16-193 CB&Q Imitation Aluminum	16-194 CB&Q Red	16-195 BNSF Silver	16-196 BNSF Yellow	16-197 SP/SF Overland Light Gray	16-198 SP/SF Overland Dark Gray	16-199 Rock Island Maroon	16-200 Rock Island Red	16-201 Rock Island Aluminum White	16-202 John Deere Yellow	16-203 John Deere Green	16-204 Light Flesh
16-205 Medium Flesh	16-206 Dark Flesh	16-207 ACL Royal Purple	16-208 Metallic Gold	16-801 Decal Setting Solution	16-802 Decal Softening Solution	16-803 Liquid Decal Film					

Dye to limitations of four color printing process, colors shown may not be an identical match.

FREAKflex™ PAINTS

If you're not satisfied until every detail is perfect, let FREAKflex™ bring your models to life. It's a superior hobby paint designed to help modelers achieve authentic, professional painting results with greater ease and proficiency. Waterbased FREAKflex™ is easy to apply with an airbrush or paint brush, and clean-up is fast and easy with MODELflex™ cleaner. FREAKflex™ paint dries in 12 to 15 minutes at room temperature (3 to 5 minutes if heat dried).

The FREAKflex™ Advantages:

- * Extreme fine-coat coverage
- * Excellent adhering water-based acrylics
- * Superior color retention
- * Primers are not required (Recommended with lighter colors)
- * Easy to apply with airbrush or conventional applicators
- * Adheres to most plastics, metals, resins and many other substrates



- * Long shelf life (Lifetime warranty with unused, unopened bottles)
- * Environmentally friendly, non-flammable and safe to use. FREAKflex™ is available in 1 oz (30ml) bottles. FREAKflex™ paints were designed to bring out the best (or the worst!) in your fantasy models.
- * Display racks are available to retailers.

IMAGINE Air™ UNIVERSAL PAINT FILM

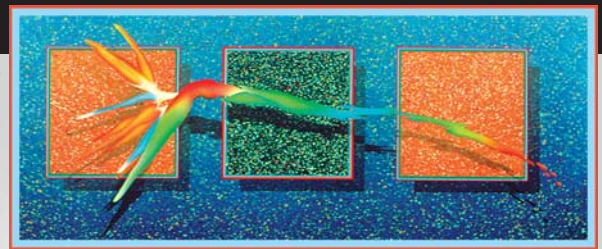
The ideal color palette for sign painters, automotive, and motorcycle graphic artists. IMAGINE Air UNIVERSAL PAINT FILM offers a range of 60 appealing colors, including 10 candies. Can be easily applied to a wide variety of materials including metal, vinyl, and wood. Quick drying formula, fine coat coverage. Pre-reduced and ready to spray through an airbrush; can also be

applied with a paint brush. Water-based acrylic, non-toxic, odorless. Cleans up with Badger's airbrush cleaner. Available in 4 ounce plastic bottles.



17-161 Clear Coat

Illustration on canvas by:
Peter West, MFA



AIR-OPAQUE™ PAINTS

For artists who demand vibrant color and consistent results. Air-Opaque™ offers an exciting range of pre-reduced, colorfast, waterbased, non-toxic colors, pearlescent colors and the option of mixing pearlescent white with colors to create a pearl effect. Used by illustrators and fine artists, they are formulated for use with airbrushes, technical pens (not recommended with pearlescents), and paint brushes for use on paper; illustration board and canvas. Air-Opaque™ is formulated to make clean up of tools quick and easy. Air-Opaque™ is available in individual 1 oz. (30ml) bottles, or in sets of seven colors. Air-Opaque™ cleaner is available in 1oz. (30ml), 4oz. (120ml), and 16oz. (480ml) easy-dispensing bottles.

NOTE: Display racks are available to retailers.

FEATURES

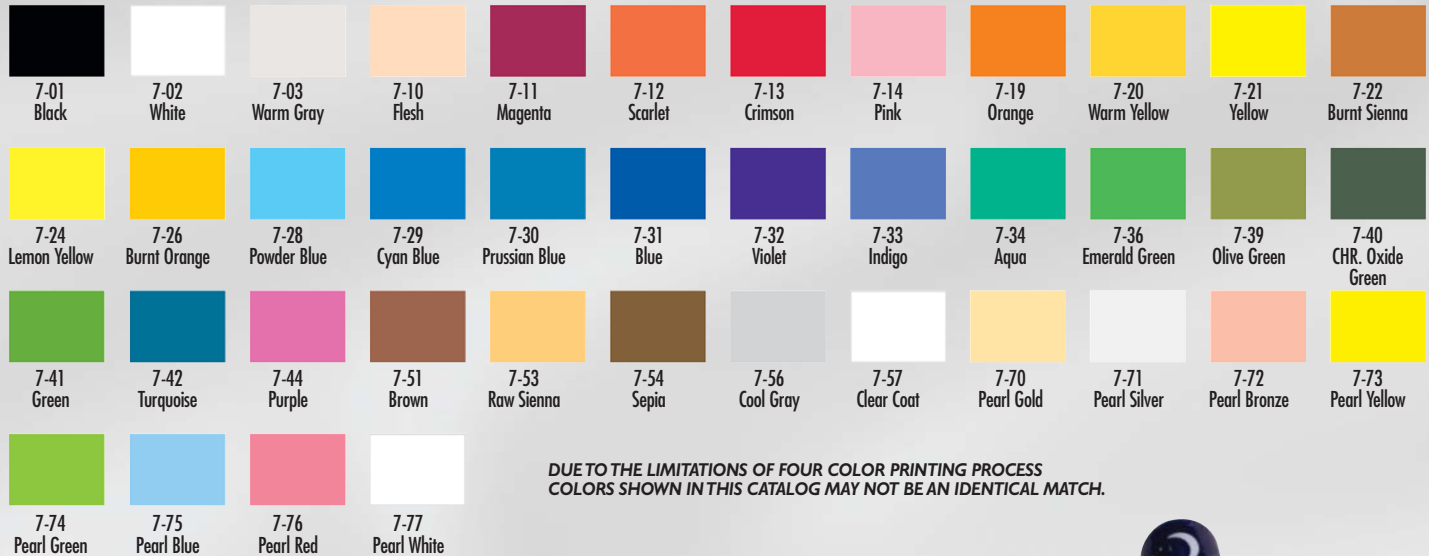
- * Choice of 30 non-toxic, intermixable colors, 8 pearlescent colors, plus clear coat.
- * Quick-drying, water resistant
- * Made of organic pigments in waterbased acrylic copolymer; ready-to-use, requires no chemical thinner (thin with water; if necessary)
- * Available in 1 oz. (30ml) and 4oz. (120ml) bottles
- * Non-toxic. Safe to use
- * 100% colorfast
- * Non-flammable, non-carcinogenic
- * Paint may be special ordered in quart (0.94 ltr.) or gallon (3.78 ltr.) sizes

PRIMARY SET (#701): Crimson, Yellow, Blue, Green, Brown, Black and White.

SECONDARY SET (#702): Scarlet, Magenta, Orange, Violet, Indigo, Aqua and Turquoise.

SUPPLEMENTARY SET (#703): Flesh, Burnt Sienna, Powder Blue, Sepia, Chrome Oxide Green, Prussian Blue and Warm Yellow.

PEARL SET (#704): Pearl Silver, Pearl Bronze, Pearl Yellow, Pearl Green, Pearl Gold, Pearl Blue and Pearl Red.



DUE TO THE LIMITATIONS OF FOUR COLOR PRINTING PROCESS
COLORS SHOWN IN THIS CATALOG MAY NOT BE AN IDENTICAL MATCH.

PAINT

NAIL FLAIR PAINTS

Voilà! Unleash your creative powers with Nail Flair paints. From soft, subtle shading to wild and colorful designs, nails come alive with Badger's Nail Flair. Available in 32 fashionable colors, Nail Flair's water based acrylic formula is airbrush ready...no need to dilute...and sprays on beautifully. Nail Flair is non-toxic, odorless, quick drying. Let your imagination and creativity run wild with Nail Flair!

Nail Flair is available in one ounce bottles. Nail Flair top coat is available in 1/2 oz. bottles with brush top #10-100 and 4 oz. bottle #10-200.
Nail Flair display rack available (#1000).
Nail Flair cleaner available in 4 oz. (120ml), #10-605 and 16 oz. (480ml), #10-606 bottles.



T-shirt art by:
Gary "Boomer" Johnson



AIR-TEX™ PAINTS

Air-Text™ ready-to-use textile airbrush colors make your fabric art come to life. Apply with airbrush or paint brush and heat set with an iron; the fabric remains soft and supple. Air-Text™ non-toxic colors are excellent for light (and most dark) colored textiles, i.e., polyester, cotton and denim. Materials with sizing must be pre-washed. Air-Text™ colors are washable and colorfast. They may be purchased individually, or in a seven bottle PRIMARY SET #1101. Air-Text™ cleaner, available in 4oz. (120ml) and 16oz. (480ml) sizes, easily removes dried color from airbrushes, paint brushes and work surfaces. NOTE: Display rack is available to retailers.

FEATURES

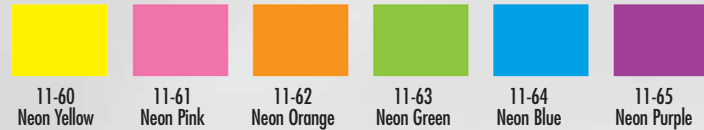
- * Available in 1oz. (30ml) and 4oz. (120ml) unbreakable plastic bottles with no-clog caps
- * Washable after heat setting and usable on a variety of fabrics
- * Available in 20 vibrant and intermixable colors
- * Made of organic pigments in waterbased acrylic copolymer, pre-reduced for immediate airbrush use
- * Paint may be special ordered in quart (0.94 ltr) or gallon (3.78 ltr) sizes



NEON FABRIC PAINTS

Create eye-catching designs in neon, using an airbrush, paint brush or sponge. Six vibrant colors-blue, pink, orange, green, yellow and purple are available in 1 oz. (30ml) and 4 oz. (120ml) sizes, or in two different three color assortments packaged on an attractive blister card. Badger's Neon Colors share the same great features as the Air-Text™ line of fabric paints.

- * Paint may be special ordered in quart (0.94 ltr) or gallon (3.78 ltr) sizes



TOTALLY TATTOO PAINTS

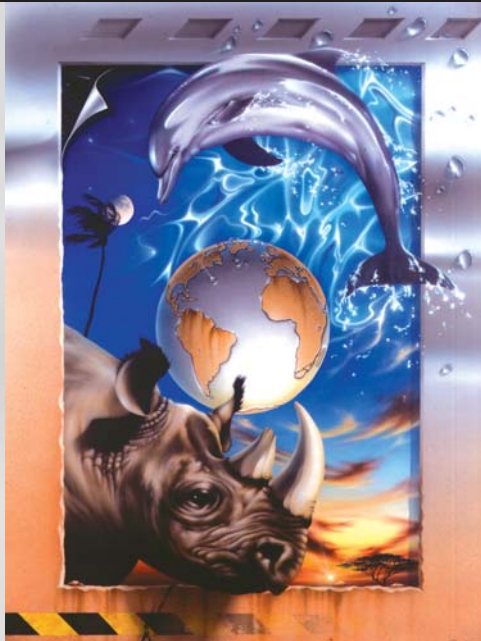
Totally Tattoo Party Art Body Paints can last 24-72 hours when applied with an airbrush. Easily removed with rubbing alcohol; safe, non-toxic, waterbased, and non-flammable!!! Available in 1 oz. (30 ml) and 4 oz. (120 ml) bottles. (Not recommended for face painting).

NEW



Actual Model
body art by:
Mark Frazier

Due to limitations of four color printing process, colors shown may not be an identical match.



◀ “The durability and precision of the Badger Anthem combine to create an airbrush flexible enough for all the demands I put on this tool. From canvas to illustrations to the murals I paint I couldn’t be more pleased with the performance and dependability of the Anthem.” *Timm Etters*

“Badger rocks!” *Joe Porter* ▶



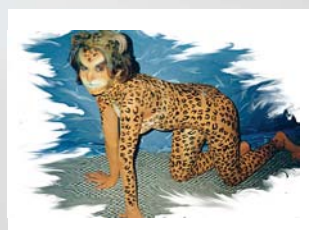
▶ “Badger Anthem airbrushes are all I use! Whether I am creating your next NHL goaltender mask or just doing my day to day T-shirt painting, I never need another airbrush!” *Jason Livery*



“I’ve been a model railroader for thirty-five years and been using Badger Airbrushes since the very beginning. I don’t use anything else.” *John Lee* ▼



“Whether painting a woodcarving for the most demanding of competitions or teaching airbrush classes to beginners, Badger is my choice for precision, practicality, and ease of use.” *Clark Schreibeis* ▶



▶ “I use Badger products because as a body artist I have to finish painting quickly, so I need reliable equipment.” *Neil Roth*

◀ “Badger has always been like family to me. Not only do they offer the widest selection of durable equipment I’ve grown very comfortable using, but whenever a problem might arise they’re always there to help set things straight, right away.” *Bill McGuffey*

“Badger Airbrushes and Air Opaque paints offer me the versatility and durability that I need for my work.” *Laurie “Paintchick” Pfaff* ▼

